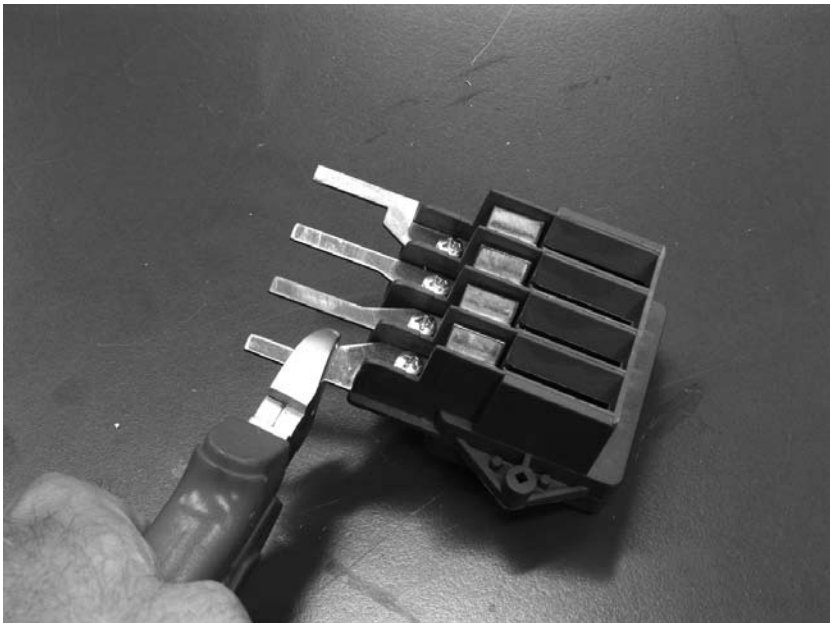


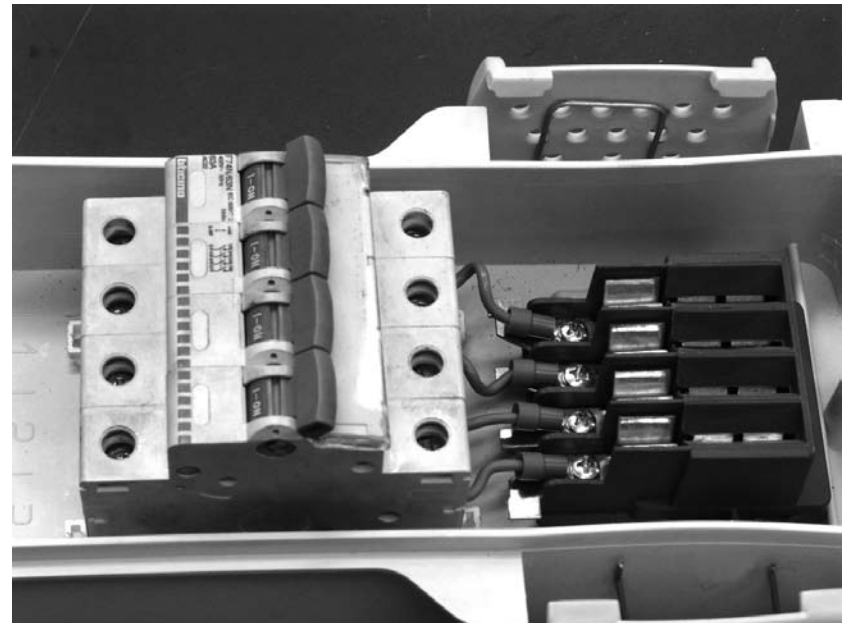
FIRST OPERATION



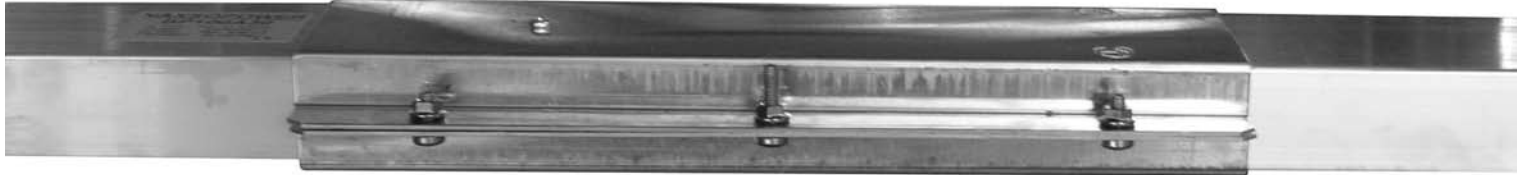
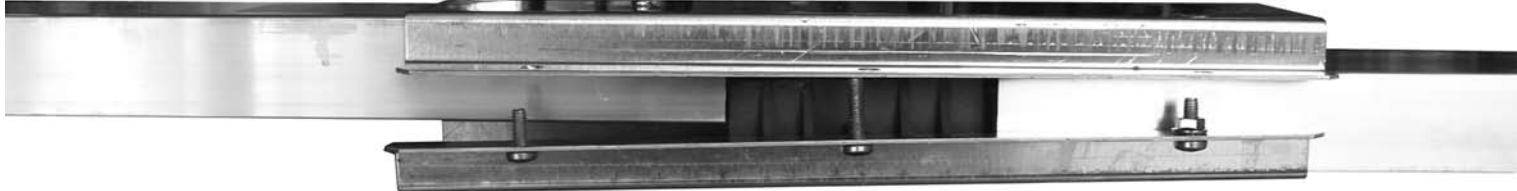
SECOND AND FINAL



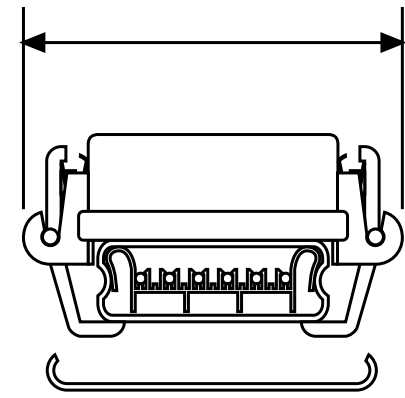
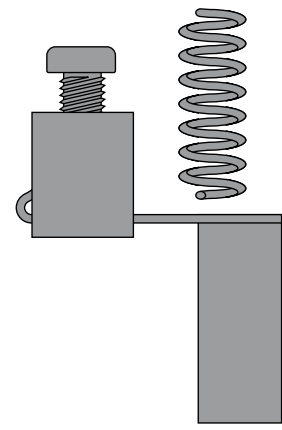
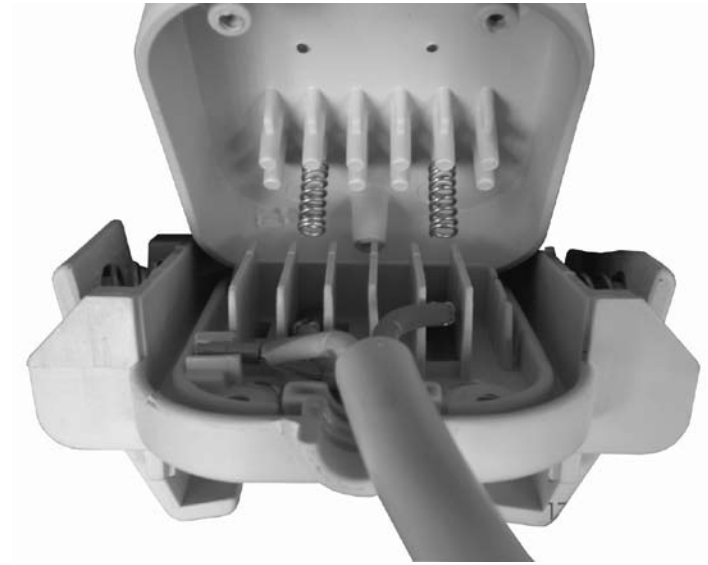
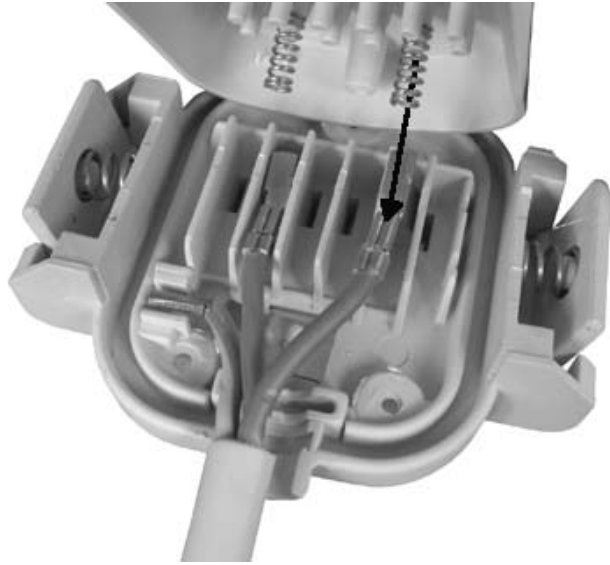
ALTERNATIVE 1-A

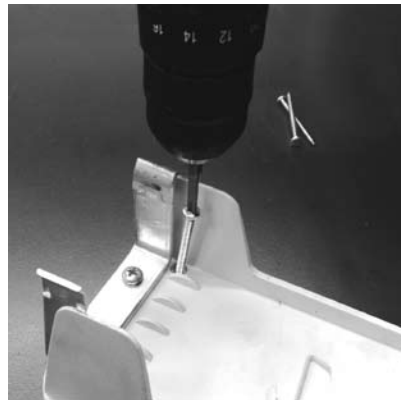
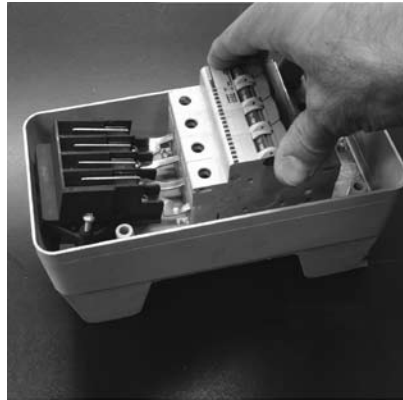
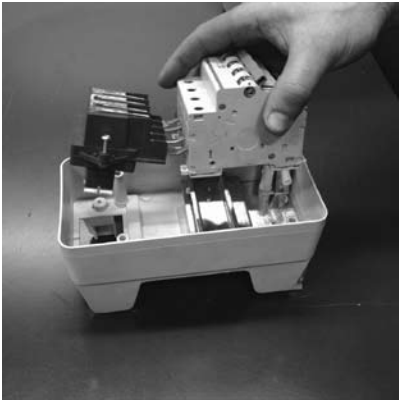
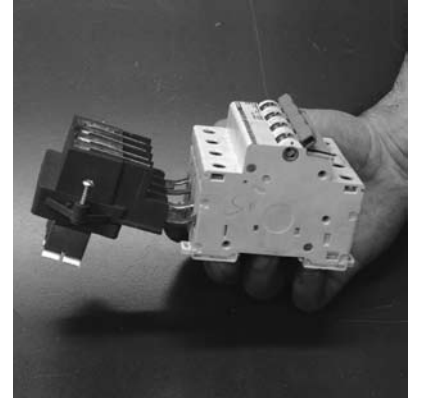
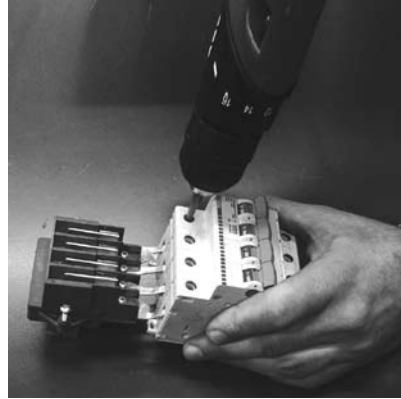
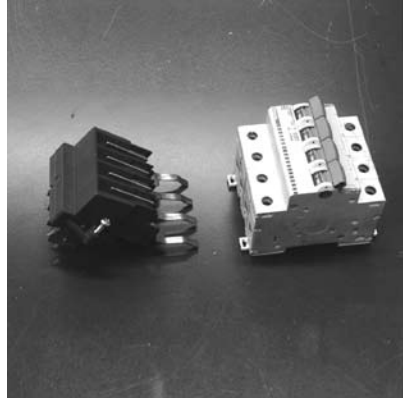
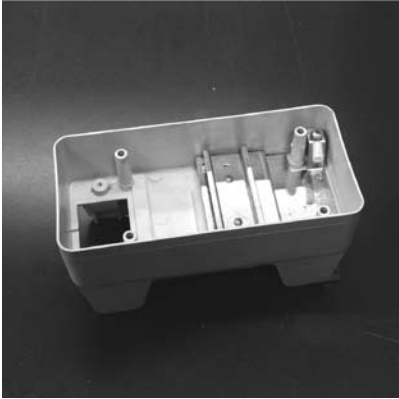


FINAL



MOUSE - SM10A - SM16A

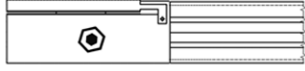




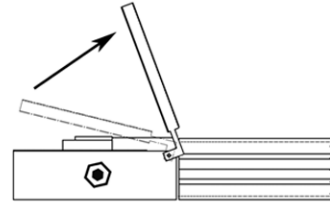
1 OPEN END



FLANGED END

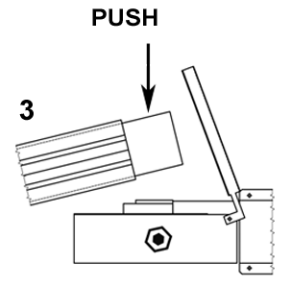


2

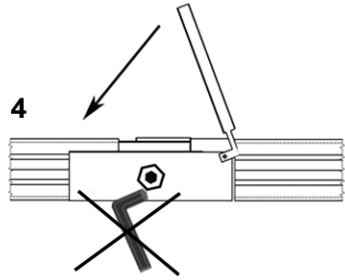


REMOVE NUTS AND WASHERS AND OPEN LID

3



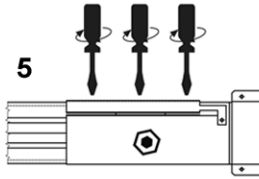
4



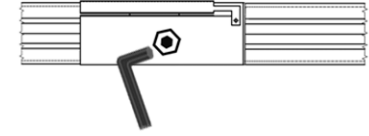
CLOSE LID REPLACE NUTS AND WASHERS

SECURELY TIGHTEN NUTS

5



6

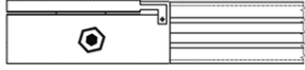


LAST SECURELY TIGHTEN CONDUCTOR FIXING BOLT

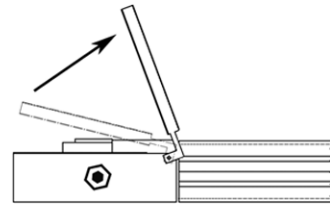
1 OPEN END



FLANGED END

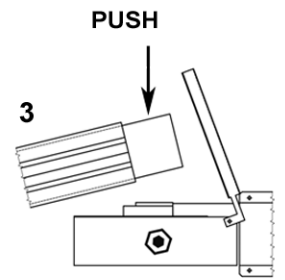


2

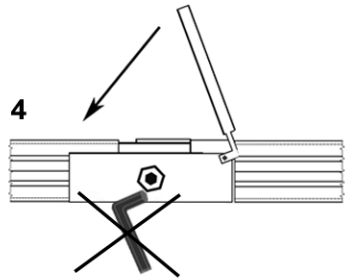


REMOVE NUTS AND WASHERS AND OPEN LID

3



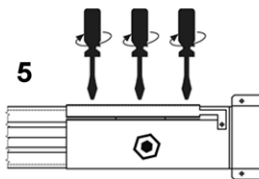
4



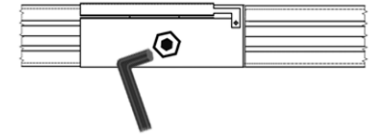
CLOSE LID REPLACE NUTS AND WASHERS

SECURELY TIGHTEN NUTS

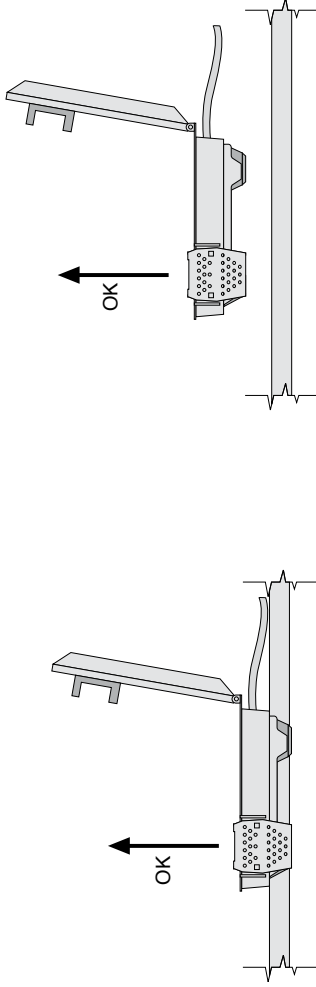
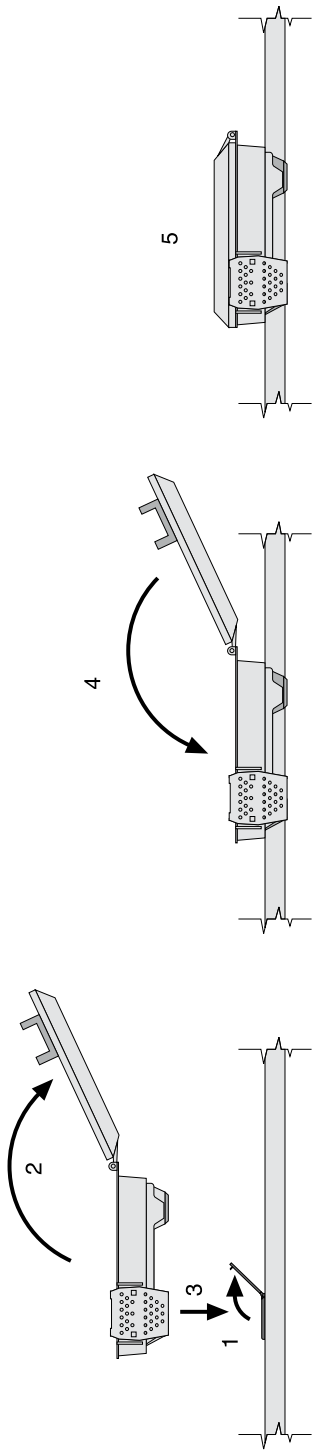
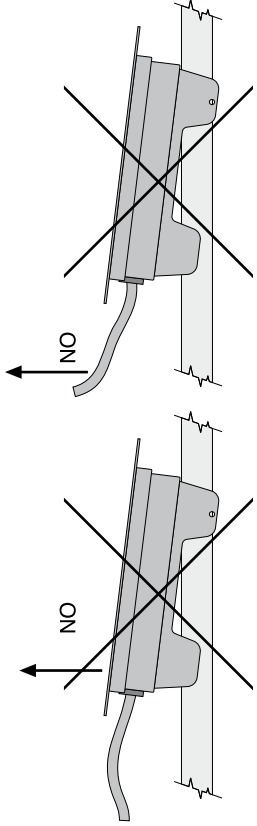
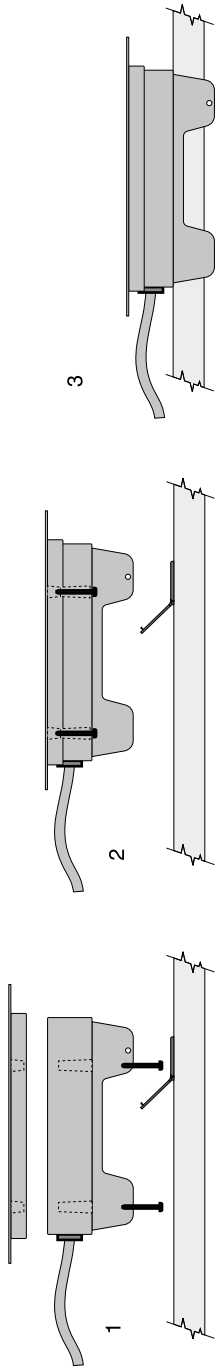
5



6



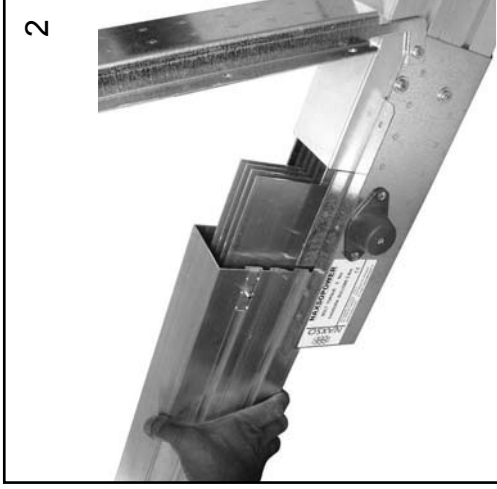
LAST SECURELY TIGHTEN CONDUCTOR FIXING BOLT





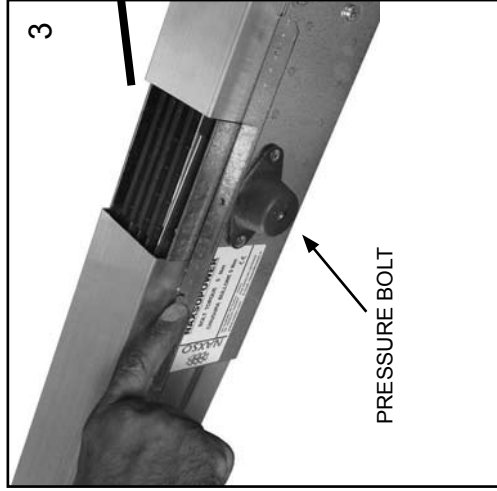
1

OPEN THE LID UNSCREW THE LID SCREWS
APERTURA VITI COPERCHIO



2

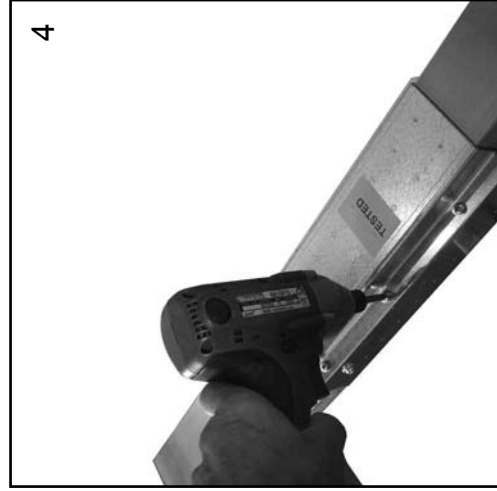
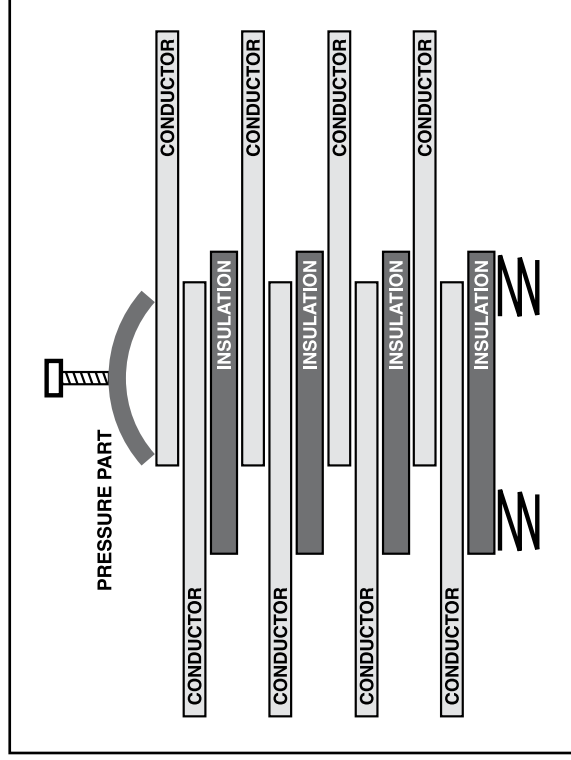
OPEN FULLY THE LID
APERTURA COPERCHIO



3

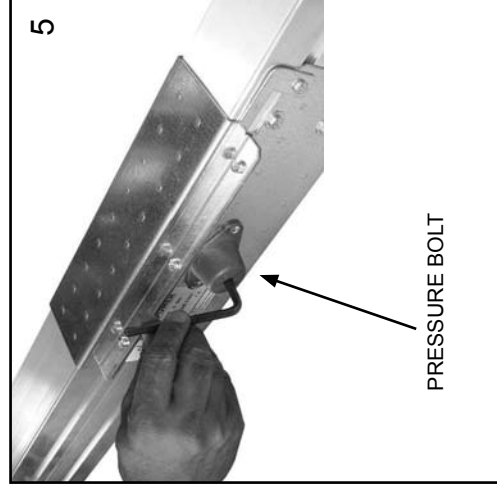
PRESSURE BOLT

INSERT THE TWO LENGTHS THE WAY YOU SEE
INSERIMENTO DELLE DUE BARRE



4

BE SURE THE TWO LENGTHS ARE WELL
CONNECTED
CHIUSURA VITI COPERCHIO



5

PRESSURE BOLT

BE SURE THE TWO LENGTHS ARE WELL
CONNECTED
CHIUSURA VITE BRUGOLA GIUNTO

SANDWICH ASSEMBLY INSTRUCTIONS - STRUZIONI DI MONTAGGIO SANDWICH

