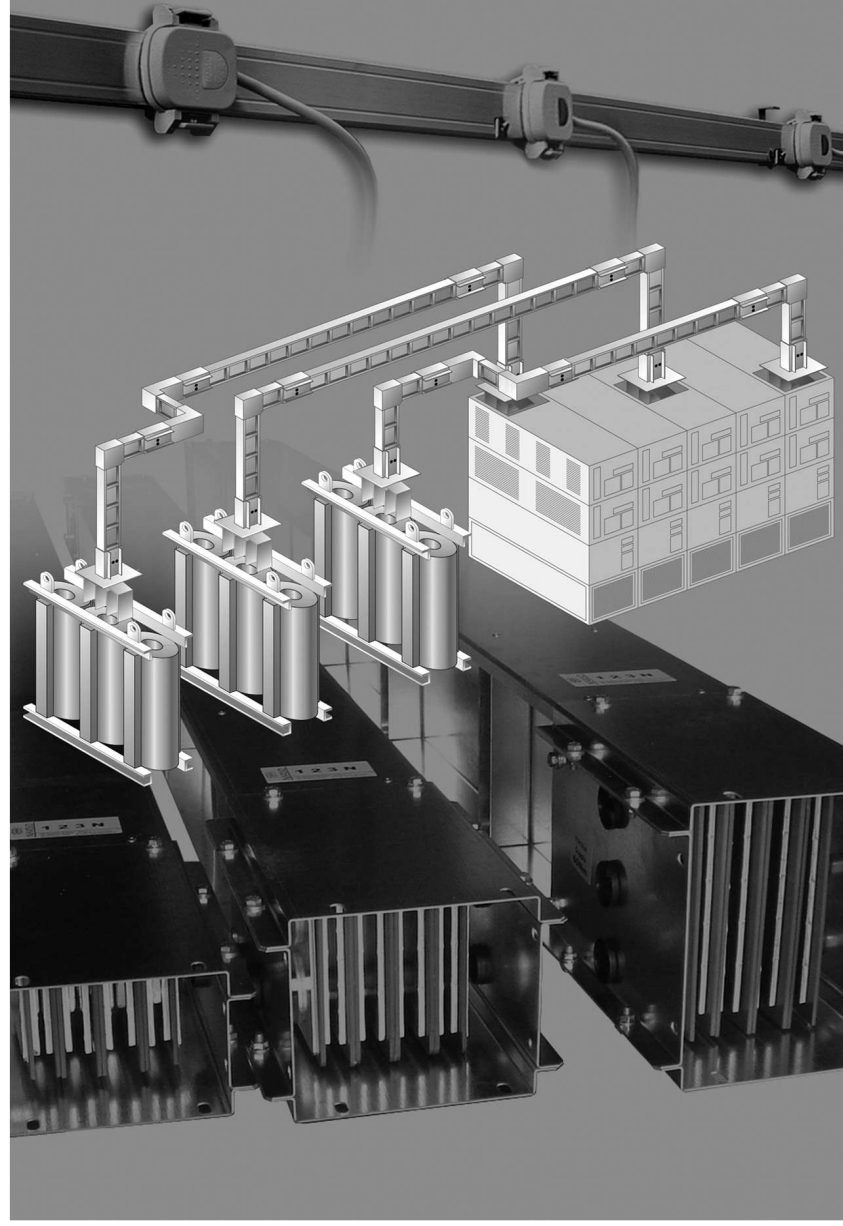
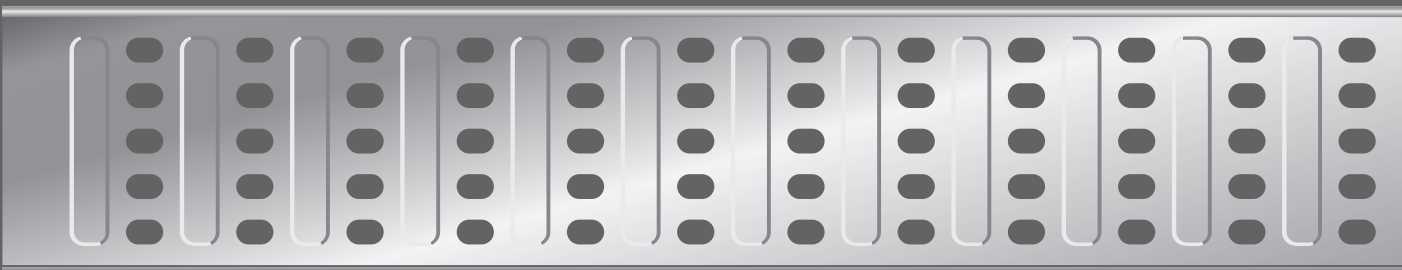


PRICE LIST



BUSBAR TRUNKING





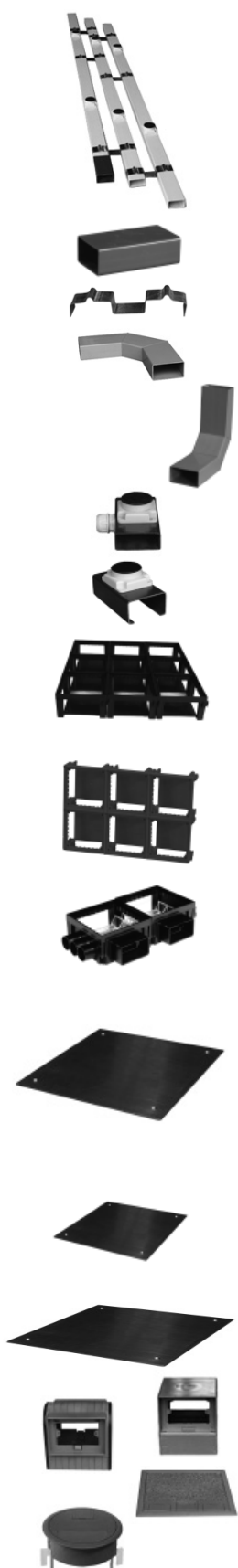
DESCRIZIONE	CODICE	€	PZ. CONF
3 mt straight lengths 3 outlets aluminium housing 25A 4P+PE	BA25A30	38,00	12
1 mt straight lengths 1 outlet aluminium housing 25A 6P+PE	BA25A106	24,00	12
3 mt straight lengths 3 outlets aluminium housing 25A 2P+PE	BA25A302	37,00	12
3 mt straight lengths 3 outlets aluminium housing 25A 2P+PE	BA25A306	54,00	12
3 mt straight lengths 5 outlets aluminium housing 25A 6P+PE	BA25A3065S	57,00	12
3 mt straight lengths 3 outlets aluminium housing 40A 4P+PE	BA40A30	56,00	12
1 mt straight lengths 1 outlet aluminium housing 40A 6P+PE	BA40A106	35,00	12
3 mt straight lengths 3 outlets aluminium housing 40A 2P+PE	BA40A302	42,00	12
3 mt straight lengths 3 outlets aluminium housing 40A 6P+PE	BA40A306	76,00	12
3 mt straight lengths 5 outlets aluminium housing 40A 6P+PE	BA40A3065S	82,00	12
3 mt straight lengths 3 outlets aluminium housing 63A 4P+PE	BA63A30	82,00	12
1 mt straight lengths 1 outlet aluminium housing 63A 6P+PE	BA63A106	38,00	12
3 mt straight lengths 3 outlets steel housing 25A 4P+PE	BM25A30	36,00	12
3 mt straight lengths without outlets steel housing 25A 4P+PE	BM25A30N	32,00	12
1 mt straight lengths no outlet steel housing 25A 4P+PE	*BM25A104	18,00	12
1 mt straight length no outlets steel housing 25A 6P+PE	*BM25A106	20,00	12
3 mt straight length 3 outlets steel housing 25A 6P+PE	BM25A306	52,00	12
3 mt straight lengths 1 outlet steel housing 25A 4P+PE	BM25A30N1	35,00	12
1 mt straight length no outlet steel housing 40A 6P+PE	*BM40A106	26,00	12
3 mt straight length 3 outlets steel housing 40A 4P+PE	BM40A30	55,00	12
3 mt straight length 3 outlets steel housing 40A 6P+PE	BM40A306	76,00	12
3 mt straight length 5 outlets steel housing 40A 6P+PE	BM40A3065S	80,00	12
1 mt straight length no outlet steel housing 63A 4P+PE	*BM63A104	30,00	12
1 mt straight length no outlet steel housing 63A 6P+PE	BM63A106	32,00	12
3 mt straight length 3 outlets steel housing 63A 4P+PE	BM63A30	81,00	12
*1 mt straight length with outlet add	*	6,00	



DESCRIZIONE	CODICE	€	PZ. CONF
10A tap off unfused 6 pole phase selectable (no cable) fitted with 2 contacts	SM10A	7,88	10
16A tap off unfused 6 pole phase selectable (no cable) fitted with 2 contacts	SM16A	12,60	10
10A tap off unfused 6 pole phase selectable fitted with 0,8 mt off 3x1,5 mm cable fitted with 2 contacts L1 N	SM10ACR	8,93	10
10A tap off unfused 6 pole phase selectable fitted with 0,8 mt off 3x1,5 mm cable fitted with 2 contacts L2 N	SM10ACG	8,93	10
10A tap off unfused 6 pole phase selectable fitted with 0,8 mt off 3x1,5 mm cable fitted with 2 contacts L3 N	SM10ACB	8,93	10
10A tap off unfused 6 pole phase selectable fitted with 0,8 mt off 3x1,5 mm cable fitted with 2 contacts L4 L5	SM10ACV	8,93	10
63A large tap-off fusible 6P phase selectable (no cable) fitted with 2 contacts (one fused at 6,3A)	SBM6A	16,80	6
16A large tap-off fusible 6P phase selectable (no cable) fitted with 2 contacts (one fused at 16A)	SBM16A	24,15	6
16A large tap-off fusible 6P phase selectable (no cable) fitted with 4 contacts (one fused at 16A)	SBM16A4	27,30	6
63A tap-off fusible 4P phase selectable fitted with 2 contacts (one fused) and with 0,8 mt off 3x1,5 mm cable NL1	SFIP55CR	16,80	10
63A tap-off fusible 4P phase selectable fitted with 2 contacts (one fused) and with 0,8 mt off 3x1,5 mm cable NL2	SFIP55CG	16,80	10
63A tap-off fusible 4P phase selectable fitted with 2 contacts (one fused) and with 0,8 mt off 3x1,5 mm cable NL3	SFIP55CB	16,80	10
63A tap-off fusible 4P phase selectable (no cable) fitted with 2 contacts (one fused at 63A)	SFIP	14,70	10
Spare 16A contact for SM10A / SM16A tap-off	CMSFM	2,63	10
63A contact carrier fused at 63A suitable for SFIP/ SBM tap-off	CMCF	4,20	10
16A contact carrier fused at 16A suitable for SBM tap-off	CMCF16	4,73	10
16A contact carrier unfused suitable for SBM tap-off	CMSF16	4,73	10
SFIP 3x1,5mmq L 08mt prepared cable.	CPF1508	2,73	10
SFIP 3x1,5mmq L 1,5mt prepared cable.	CPF1515	3,57	10
SM/SBM 3x1,5mmq L 08mt prepared cable.	CPM1508	2,63	10
SM/SBM 3x1,5mmq L 1,5mt prepared cable	CPM1515	3,47	10
SM16A/SBM16A 3x2,5mmq L 1,5mt prepared cable	CM2515	8,93	10
SM16A/SBM16A 3x2,5mmq L 3mt prepared cable	CM2530	14,70	10
Red tap-off plug insert for phase identification	IFSR*	0,32	20
Yellow tap-off plug insert for phase identification	IFSG*	0,32	20
Blue tap-off plug insert for phase identification	IFSB*	0,32	20
Green tap-off plug insert for phase identification	IFSV*	0,32	20
*For all tap-offs			
Outlets slots plastic cover IP41	TOIP41	0,84	10
IP55 joint rubber cover	GRIP55	1,05	12
IP55 rubber endcap	CTIP55	4,20	6

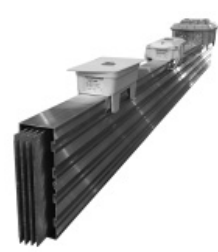


DESCRIZIONE	CODICE	€	PZ. CONF
Standard alluminium bracket. Capacity 10 kg	STCA	4,41	20
Standard alluminium bracket anodized treatment. Capacity 10 kg	STCAA	6,51	20
Wall mounted bracket. Capacity 30 kg	STCAD	6,30	20
Twin steel bracket. Capacity 30 kg	STCAP	4,73	20
Wall bracket plastic lid. Capacity 30 Kg	STCAPD	3,50	20
Standard steel folded bracket plastic lid. Capacity 30 kg	STCM	3,68	20
Steel bracket for carrying both busbar trunking and pvc conduit. Capacity 30 kg	STCMC	7,14	20
Standard steel folded bracket steel lid. Capacity 30 kg	STCMF	4,20	20
Standard bracket for metal lighting busbar capacity 30 Kg.	STCMM	4,00	20
Standard steel bracket plastic lid for use with chain suspension. Capacity 30 kg	STCMS	3,68	20
Steel folded bracket steel lid with security busbar housing position. Capacity 30 kg	STCMSA	6,30	20
Steel bracket steel lid with security busbar housing position. Capacity 30 kg	STCMSD	6,30	20
Standard steel bracket steel lid for use with chain suspension. Capacity 30 kg	STCMSF	4,20	20
Standard steel folded bracket steel lid with security screw. Capacity 30 kg	STCMSV	5,04	20
Ceiling safety bracket with screw and plastic lid	STCMVS	4,50	20
Universal suspension rod spring	CMA	0,89	10
Universal plastic trunking 18x18 mm 2 mt long	CP18	4,20	20
PVC trunking joint	CP18G	2,31	10
Universal steel reinforcement sleeve	GRFP	3,99	10
Steel reinforcement sleeve for metal lighting busbar	GRFPM	3,00	10
Universal suspension cord kit L 2 mt L 3 mt	HF12EF HF13EF	7,88 9,45	10 10
All pourpose hook. Capacity 12 kg	ST8	1,05	50
Universal twin steel bracket for twin trunking	STCBD	4,10	12
Steel bracket for light fitting. Capacity 12 kg, only for aluminium range	STCI	2,31	
All pourpose suspension braket for lighting and bu- sbar. The same braket can hold the busbar and the lighting lamp. Capacity 20 kg	STLN	2,73	10
Steel universal bracket. Capacity 30 kg	STM	4,20	
All pourpose braket for ceiling and wall. Capacity 12 kg	STMF	3,15	10
Universal security tap off cable holder to prevent unhook of the lamp	STSAF	3,57	10
Easy ceiling hook. Capacity 20 kg	STSF	1,05	10
Universal threaded suspension rod	TB10	1,58	10



DESCRIZIONE	CODICE	€	PZ. CONF
Floor fixing tool	AA000	79,80	1
Empty trunking lengths (65x25mm)	CASN25001	6,09	48
Empty trunking lengths (65x35mm)	CASN35001	6,93	48
Empty trunking lengths (65x25mm) prepared with outlets	CASA10025	12,60	48
Empty trunking lengths (65x25mm) prepared with outlets	CASA10035	12,08	48
Empty trunking lengths (65x25mm) holed prepared	CAST25001	8,40	48
Empty trunking lengths (65x25mm) holed prepared	CAST35001	9,66	48
Trunking sleeve 65x25	MARS25001	3,15	10
Trunking sleeve 65x35	MARS35001	3,57	10
Spacer to install trunkings	MADS25001	3,57	10
Flexiboll empty plastic joint	EGFL40035	12,60	10
Empty flat band 65x25	C5PI25001	9,98	5
Empty flat band 65x35	C5PI35001	9,98	5
Empty edge band 65x25	C5SA25001	9,98	5
Empty edge band 65x35	C5SA35001	9,98	5
Prepared outlet box for pipe 70 x 30	DEPL25001	15,75	5
Derivazione per tubo 70x40	DEPL35001	15,75	5
Interlocking sleeve 70x30	BTIC25001	9,45	10
Interlocking sleeve 70x40	BTIC35001	9,45	10
Floor box 120x120x60	BXSP01	18,38	1
Floor box 240x240x60	BXSP04	48,83	1
Floor box 360x360x60	BXSP09	57,75	1
1 module skeleton box (cover included)	BXPA01	22,05	1
2 module skeleton box (cover included)	BXPA02	38,85	1
3 module skeleton box (cover included)	BXPA03	50,40	1
6 module skeleton box (cover included)	BXPA06	79,80	1
Single box to accept conduits	CSSP01	18,90	1
Double box to accept conduits	CSSP02	33,60	1
Triple box to accept conduits	CSSP03	48,30	1
Steel blank cover single	CBX01 ACC	29,40	1
Steel blank cover double	CBX04 ACC	51,45	1
Steel blank cover triple	CBX09 ACC	90,30	1
Brass blank cover single	CBX01 OTT	40,95	1
Brass blank cover double	CBX04 OTT	72,45	1
Brass blank cover triple	CBX09 OTT	142,80	1
Steel cover for underfloor box	CCS01ACC	27,30	1
Steel cover for double underfloor box	CCS02ACC	39,90	1
Steel cover for triple underfloor box	CCS03ACC	48,30	1
Brass cover for underfloor box	CCS01OTT	40,95	1
Brass cover for double underfloor box	CCS02OTT	50,40	1
Brass cover for triple underfloor box	CCS03OTT	75,60	1
3 + 3 module column	TRPA	26,46	1
Giugiaro design 3 + 3 module column	TRGA	32,76	1
8 + 8 module large floorbox complete with cover	TRSG	88,20	1
4 + 4 module large floorbox complete with cover	TRSP	58,34	1
Circular floorbox	TRST	46,62	1

DESCRIZIONE	CODICE	€	PZ. CONF
Low power straight lengths 40A 3 m 40A 4 pole al conductor 3 outlets one side small outlet window to fit max 160A tap off	BP40A30	80,00	4
Low power straight lengths 40A 1 m 40A 4 pole al conductor 3 outlets one side small outlet window to fit max 160A tap off	BP40A10	38,00	4
Low power straight lengths 63A 3 m 63A 4 pole al conductor 3 outlets one side small outlet window to fit max 160A tap off	BP63A30	86,00	4
Low power straight lengths 63A 1 m 63A 4 pole al conductor 1 outlets one side small outlet window to fit max 160A tap off	BP63A10	40,00	4
Low power straight lengths 100A 3 m 100A 4 pole al conductor 3 outlets one side small outlet window to fit max 160A tap off	BP100A30	142,00	4
Low power straight lengths 100A 1 m 100A 4 pole al conductor 1 outlets one side small outlet window to fit max 160A tap off	BP100A10	58,00	4
Low power straight lengths 160A 3 m 160A 4 pole al conductor 3 outlets one side small outlet window to fit max 160A tap off	BP160A30	168,00	4
Low power straight lengths 160A 1 m 160A 4 pole al conductor 1 outlets one side small outlet window to fit max 160A tap off	BP160A10	78,00	4
Power straight lengths 250A 3 mt 250A 4 aluminium conductors 3 outlets one side small outlet window to fit max 160A tap off	BPK250A30	210,00	4
Power straight lengths 250A 1 mt 250A 4 aluminium conductors 1 outlet one side small outlet window to fit max 160A tap off	BPK250A10	140,00	4
Power straight lengths 315A 3 mt 315A 4 aluminium conductors 3 outlets one side small outlet to fit max 160A tap off	BPK315A30	290,00	4
Power straight lengths 250A 1 mt 315A 4 aluminium conductors 1 outlet one side small outlet window to fit max 160A tap off	BPK315A10	160,00	4
Power straight lengths 400A 3 mt 400A 4 aluminium conductors 3 outlets one side small outlet to fit max 160A tap off	BPK400A30	320,00	4
Power straight lengths 250A 1 mt 400A 4 aluminium conductors 1 outlet one side small outlet window to fit max 160A tap off	BPK400A10	180,00	4
Power straight lengths 250A 3 m 250A 4 pole al conductor 5 big outlets windows on one sides and 3 big outlets windows on the other side to fit max 300A tap off	BPG250A30 BPG250A10	242,00 148,00	4
Power straight lengths 315A 3 m 315A 4 pole al conductor 5 big outlets windows on one sides and 3 big outlets windows on the other side to fit max 300A tap off	BPG315A30 BPG315A10	325,00 175,00	4
Power straight lengths 400A 3 m 400A 4 pole al conductor 5 big outlets windows on one sides and 3 big outlets windows on the other side to fit max 300A tap off	BPG400A30 BPG400A10	360,00 184,00	4
Power straight lengths 500A 3 m 500A 4 pole al conductor 5 big outlets windows on one sides and 3 big outlets windows on the other side to fit max 300A tap off	BPG500A30 BPG500A10	420,00 199,00	4
Power straight lengths 630A 3 m 630A 4 pole al conductor 5 big outlets windows on one sides and 3 big outlets windows on the other side to fit max 300A tap off	BPG630A30 BPG630A10	520,00 270,00	4
Power straight lengths 800A 3 m 800A 4 pole al conductor 5 big outlets windows on one sides and 3 big outlets windows on the other side to fit max 300A tap off	BPGG800A30 BPGG800A10	730,00 410,00	4
Barra rettilinea 1000A 5 finestre grandi lato A 3 finestre grandi lato B massima spina inseribile 300A 4P+T conduttori in alluminio	BPGG1000A30 BPGG1000A10	880,00 435,00	4
Barra rettilinea 1250A 5 finestre grandi lato A 3 finestre grandi lato B massima spina inseribile 300A 4P+T conduttori in alluminio	BPGG1250A30 BPGG1250A10	980,00 485,00	4

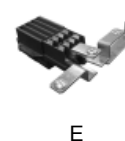
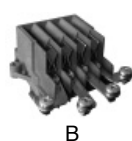
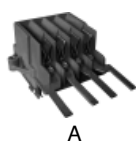


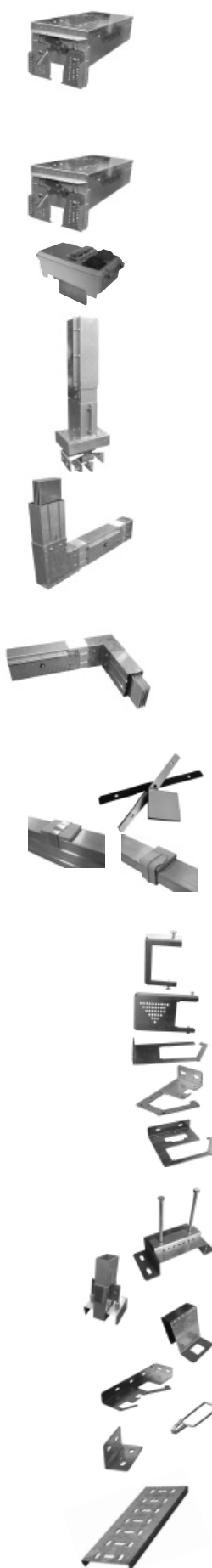


DESCRIZIONE	CODICE	€	PZ. CONF
Low power end feeds 40/63A for BP range standard IP55 end feed included	TASX63A	75,60	2
Low power end feeds 40/63A for BP range reverse IP55 end feed included	TADX63A	82,95	2
Low power end feeds 100A for BP range standard IP55 end feed included	TASX100A	107,10	2
Low power end feeds 100A for BP range reverse IP55 end feed included	TADX100A	121,80	2
Low power end feeds 100/160A for BP range standard IP55 end feed included	TASX160A	140,70	2
Low power end feeds 100/160A for BP range reverse IP55 end feed included	TADX160A	165,90	2
Power reverse metal box feed 40/63A	TADXM40/63A	82,95	2
Power end metal box feed 40/63A	TASXM40/63A	75,60	2
Power end metal box feed 160A	TASXM160A	140,70	2
Power reverse metal box feed 160A	TADXM160A	165,90	2
Power end feeds 250/400A for BPG range standard IP55 end feed included	TASX400A	275,10	2
Power end feeds 250/400A for BPG range reverse IP55 end feed included	TADX400A	312,90	2
Power end feeds 500/630A standard IP55 end feed included	TASX630A	564,17	2
Power end feeds 500/630A reverse IP55 end feed included	TADX630A	588,49	2
Power end feeds 800/1000A standard IP55 end feed included	TASX1000A	666,75	2
Power end feeds 800/1000A reverse IP55 end feed included	TADX1000A	736,09	2
Power end feeds 250/400A standard IP55 end feed included	TASXBPK400	231,00	2
Power end feeds 250/400A reverse IP55 end feed included	TADXBPK400	273,00	2
Power reverse metal box feed 250A prepared for breacker	TADXMCB250	a richiesta	2
Power reverse metal box feed 400A prepared for breacker	TADXMCB400	a richiesta	2
Power reverse metal box feed 500A prepared for breacker	TADXMCB500	a richiesta	2
Power reverse metal box feed 630A prepared for breacker	TADXMCB630	a richiesta	2
Power reverse metal box feed 1000A prepared for breacker	TADXMCB1000	a richiesta	2
Fire barrier standard lenght 500 mm the fire barrier shall be inserted according drawings by NAXSO	ACPWP	144,90	1
40/63/100A IP55 flexible joint	ACPWG	357,63	1
160/250A IP55 flexible joint	BPTF BPGTF BPGGTF	315,00 315,00 315,00	1 1 1
250/400A IP55 flexible joint	FLX100A	252,00	1
500/630A IP55 flexible joint		567,00	1
800/1000A IP55 flexible joint		672,00	1
400A IP55 flexible joint for BPK range	FLX630A	840,00	1
800/1000A IP55 flexible joint for BPK range	FLX1000A	1438,50	1
250/400A IP55 flexible joint for K range	FLXK400A	577,50	1



DESCRIZIONE	CODICE	€	PZ. CONF
Standard small 16A tap off with screw terminal	CAT16	29,40	2
16A 3P+T tap off fused with 10 x 38 fuse holder	CAT16F	35,70	2
16A1P+T tap off fused L1N	CAT16MF1	36,60	2
16A1P+T tap off fused L2N	CAT16MF2	36,60	2
16A1P+T tap off fused L3N	CAT16MF3	36,60	2
Standard 32A 3P+T tap off with screw terminal	CAT32	37,80	2
Standard 32A 3P+T tap off with 10 x 38 fuse holder	CAT32F	44,10	2
Standard 32A 3P +T tap off with rail for 4 units circuit breaker without cover window built in stiff terminal	CAT32SD	42,00	2
Standard 32A 3P +T tap off with rail for 4 units circuit breaker without cover window with screw terminal	CAT32SDM	44,10	2
Standard 32A 3P +T tap off with rail for 4 units circuit breaker with cover window built in stiff terminal	CAT32D	50,40	2
Standard 32A 3P+T tap off DIN rail for MCB and screwed terminal	CAT32DM	50,40	2
32A tap off DIN rail for MCB without window cover	BULL32SD	62,00	2
32A tap off DIN rail for MCB	BULL32D	64,00	2
32A tap off DIN rail for MCB screwed terminal	BULL32DT	68,00	2
16A tap off interlocked lid with 10 x 38 fuse holder	BULL16F	54,60	2
32A tap off interlocked lid with 10 x 38 fuse holder	BULL32F	67,20	2
50A tap off interlocked lid with 10 x 38 fuse holder	BULL50F	73,50	2
100A tap off interlocked lid with 22 x 58 fuse holder compact size for flex cables	BULL100F	168,00	2
63A TAP OFF 4 units for circuit breaker interlocked lid screw terminals without window cover	BULL63SDM	75,60	2
63A TAP OFF 4 units for circuit breaker interlocked lid stiff terminals with window cover	BULL63D	77,70	2
63A TAP OFF 4 units for circuit breaker interlocked lid stiff terminals without window cover	BULL63SD	73,50	2
Fused 50A supercat tap off	SUPERCAT50F	95,00	2
Fused 100A supercat tap off	SUPERCAT100F	145,00	2
Fused 160A supercat tap off	SUPERCAT160F	240,00	2
Supercat 50A tap off with DIN rail for MCB	SUPERCAT63D	100,00	2
Supercat 1600A tap off with DIN rail for MCB	SUPERCAT160D	240,00	2
Supercat tap off with CEE special on request sockets	SUPERCATCEE	a richiesta	2
100A tap off interlocked lid with 22 x 58 fuse holder plastic housing	STAR100F	168,00	2
125A tap off interlocked lid with NH00 fuse holder plastic housing	STAR125F	199,50	2
160A tap off interlocked lid with NH00 fuse holder plastic housing	STAR160F	273,00	2
63A tap off 8 units for circuit breaker interlocked lid screw terminals without cover protection window plastic housing	STAR63SD	102,90	2
63A tap off 8 units for circuit breaker interlocked lid screw terminals with cover protection window plastic housing	STAR63D	113,40	2
100A tap off 8 units for circuit breaker interlocked lid screw terminals without cover protection window plastic housing	STAR100SD	165,90	2
100A tap off 8 units for circuit breaker interlocked lid screw terminals with cover protection window plastic housing	STAR100D	176,40	2
160A tap off 8 units for circuit breaker interlocked lid screw terminals with cover protection window plastic housing	STAR160D	273,00	2



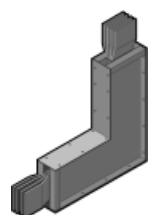
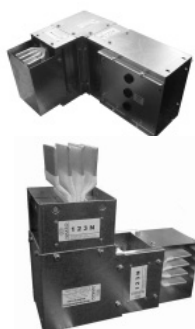
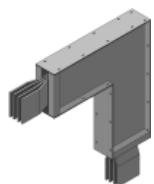
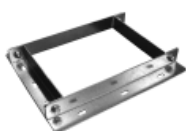


DESCRIZIONE	CODICE	€	PZ. CONF
160A tap off 8 units MCB interlocked lid with special screwed terminal cover protection window plastic housing	STAR160DM	300,00	2
200A tap off for circuit breaker interlocked lid metal housing base fixing plate for MCCB and MCB screw terminals	STAR200DM	399,00	2
250A tap off interlocked lid with nh1 fuse holder metal housing box	STAR250F	630,00	2
300A tap off for circuit breaker interlocked lid metal housing base fixing plate for MCCB and MCB screw terminals			
Special tap-off with setting under request	STAR S1	a richiesta	2
Special tap-off with setting under request	STAR S2	a richiesta	2
Power 400A flanged terminal	QBPG400	220,00	1
Power 630A flanged terminal	QBPG630	280,00	1
Power 1000A flanged terminal	QBPGG1000	340,00	1
Power 1250A flanged terminal	QBPGG1250	440,00	1
Power 400A flanged terminal	CSBPG400	a richiesta	1
Power 630A flanged terminal	CSBPG630	a richiesta	1
Power 1000A flanged terminal	CSBPGG1000	a richiesta	1
Power 1250A flanged terminal	CSBPGG1250	a richiesta	1
Power 400A flanged terminal	CPBPG400	a richiesta	1
Power 630A flanged terminal	CPBPG630	a richiesta	1
Power 1000A flanged terminal	CPBPGG1000	a richiesta	1
Power 1250A flanged terminal	CPBPGG1250	a richiesta	1
BP range IP55 kit for joints for reverse feeds	IP55BPR	8,40	10
BPK/BPG/BPGG IP55 kit for joints for reverse fee	IP55BRG	10,50	10
BP/BPK range IP55 cover kit for outlet window	IP55 OT	4,41	10
BPG/BPGG range IP55 cover kit for outlet window	IP55OTG	5,25	10
BP range steel wall braket	STP	6,30	10
BPK/BPG small all pourpose braket for wall installation or ceiling	SBRK	8,40	10
BPK wall or ceiling braket	SBPK	12,60	10
BPG wall braket	STPG	15,75	10
BPG ceiling braket	STSG	18,90	10
BPGG wall braket	STSGG	39,90	10
BPGG ceiling braket	STCGG	44,10	10
Vertical riser braket for BP range	SPVSP	42,00	10
Vertical riser braket for BPK range	SPVSK	48,30	10
Vertical riser braket for BPG range	SPVSG	51,45	10
Vertical riser braket for BPGG range	SPVSGG	67,20	10
Vertical expansion braket	SPVBPG	86,00	10
Stell braket for BP range to accomodate adjacent conduits	STPP	9,45	10
Steel braket for fixing both BP and lux range too	STSL	16,80	10
Light wire braket for BP	STCIP	4,41	10
Wall braket for spacing profile PRPK range	STPD	6,30	10
Profile for spacing braket BP range 200 mm	PRPK02	4,20	10
Profile for spacing braket BP range 300 mm	PRPK03	5,25	10
Profile for spacing braket BP range 300 mm	PRPK05	7,35	10
Profile for spacing braket BP range 1000 mm	PRPK10	16,80	10

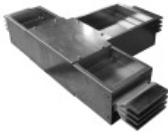
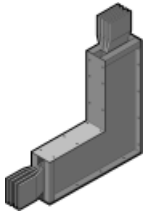
NAXSOPOWER / NAXSOSANDWICH



DESCRIZIONE	CODICE	€	PZ. CONF
Termination bracket for spacing profile	STK	4,20	10
Spare end cup	CTUSX40/250A	50,00	
Spare end cup	CTUDX40/250A	50,00	
Spare end cup	CTUSXG250/630A	70,00	
Spare end cup	CTUDXG250/630A	70,00	
Spare end cup	CTUSXK250/400A	40,00	
Spare end cup	CTUDXK250/400A	40,00	
Spare end cup	CTUSXGG1000/1250A	80,00	
Spare end cup	CTUDXGG1000/1250A	80,00	
Straight 800A feeder sandwich element joint included	NXW800FE	798,00	1
Straight 1000A feeder sandwich element joint included	NXW1000FE	840,00	1
Straight 1250A feeder sandwich element joint included	NXW1250FE	900,00	1
Straight 1600A feeder sandwich element joint included	NXW1600FE	1080,00	1
Straight 2000A feeder sandwich element joint included	NXW2000FE	1400,00	1
Straight 2500A feeder sandwich element joint included	NXW2500FE	1600,00	1
Straight 3200A feeder sandwich element joint included	NXW3200FE	1900,00	1
Straight 4000A feeder sandwich element joint included	NXW4000FE	2500,00	1
Straight 800A plug in (1 outlet) sandwich element joint included	NXW800PI	931,00	1
Straight 1000A plug in (1 outlet) sandwich element joint included	NXW1000PI	980,00	1
Straight 1250A plug in (1 outlet) sandwich element joint included	NXW1250PI	1060,00	1
Straight 1600A plug in (1 outlet) sandwich element joint included	NXW1600PI	1240,00	1
Straight 2000A plug in (1 outlet) sandwich element joint included	NXW2000PI	1550,00	1
Straight 2500A plug in (1 outlet) sandwich element joint included	NXW2500PI	1760,00	1
Straight 3200A plug in (1 outlet) sandwich element joint included	NXW3200PI	2080,00	1
Straight 4000A plug in (1 outlet) sandwich element joint included	NXW4000PI	2704,00	1
Unfused reducer	NXWUR	on request	/
Sandwich 800A flanged end plus Flatwise elbow joint included to transformer or to switchboard	NXWAT800	1396,50	1
Sandwich 1000A flanged end plus Flatwise elbow joint included to transformer or to switchboard	NXWAT1000	1470,00	1
Sandwich 1250A flanged end plus Flatwise elbow joint included to transformer or to switchboard	NXWAT1250	1554,00	1
Sandwich 1600A flanged end plus Flatwise elbow joint included to transformer or to switchboard	NXWAT1600	1695,00	1
Sandwich 2000A flanged end plus Flatwise elbow joint included to transformer or to switchboard	NXWAT2000	1848,00	1
Sandwich 2500A flanged end plus Flatwise elbow joint included to transformer or to switchboard	NXWAT2500	2205,00	1
Sandwich 3200A flanged end plus Flatwise elbow joint included to transformer or to switchboard	NXWAT3200	2940,00	1
Sandwich 4000A flanged end plus Flatwise elbow joint included to transformer or to switchboard	NXWAT4000	3822,00	1
800A standard simple flanged end straight terminal for transformer or switchboard	NXWATSC800	977,55	1
1000A standard simple flanged end straight terminal for transformer or switchboard	NXWATSC1000	1029,00	1
1250A standard simple flanged end straight terminal for transformer or switchboard	NXWATSC1250	1088,00	1



DESCRIZIONE	CODICE	€	PZ. CONF
1600A standard simple flanged end straight terminal for transformer or switchboard	NXWATSC1600	1186,50	1
2000A standard simple flanged end straight terminal for transformer or switchboard	NXWATSC2000	1293,60	1
2500A standard simple flanged end straight terminal for transformer or switchboard	NXWATSC2500	1543,50	1
3200A standard simple flanged end straight terminal for transformer or switchboard	NXWATSC3200	2060,00	1
4000A standard simple flanged end straight terminal for transformer or switchboard	NXWATSC4000	2675,50	1
Bracket 800A	NXWATST800	20,00	1
Bracket 1000A	NXWATST1000	22,00	1
Bracket 1250A	NXWATST1250	24,20	1
Bracket 1600A	NXWATST1600	26,60	1
Bracket 2000A	NXWATST2000	29,30	1
Bracket 2500A	NXWATST2500	31,00	1
Bracket 3200A	NXWATST3200	32,00	1
Bracket 4000A	NXWATST4000	34,00	1
Bracket 5000A	NXWATST5000	38,00	1
Sandwich Flatwise elbow 800A joint included	NXWCD800	648,50	1
Sandwich Flatwise elbow 1000A joint included	NXWCD1000	682,50	1
Sandwich Flatwise elbow 1250A joint included	NXWCD1250	819,00	1
Sandwich Flatwise elbow 1600A joint included	NXWCD1600	903,00	1
Sandwich Flatwise elbow 2000A joint included	NXWCD2000	1323,00	1
Sandwich Flatwise elbow 2500A joint included	NXWCD2500	1554,00	1
Sandwich Flatwise elbow 3200A joint included	NXWCD3200	2289,00	1
Sandwich Flatwise elbow 4000A joint included	NXWCD4000	2976,00	1
Sandwich Edgewise elbow 800A 500 x 500 standard joint included	NXWCPD800	648,50	1
Sandwich Edgewise elbow 1000A 500 x 500 standard joint included	NXWCPD1000	682,50	1
Sandwich Edgewise elbow 1250A 500 x 500 standard joint included	NXWCPD1250	819,00	1
Sandwich Edgewise elbow 1600A 500 x 500 standard joint included	NXWCPD1600	903,00	1
Sandwich Edgewise elbow 2000A 500 x 500 standard joint included	NXWCPD2000	1323,00	1
Sandwich Edgewise elbow 2500A 500 x 500 standard joint included	NXWCPD2500	1554,00	1
Sandwich Edgewise elbow 3200A 500 x 500 standard joint included	NXWCPD3200	2289,00	1
Sandwich Edgewise elbow 4000A 500 x 500 standard joint included	NXWCPD4000	2976,00	1
Flat 800A sandwich 500 x 500 standard downhill elbow joint included	NXWCS800	648,50	1
Flat 1000A sandwich 500 x 500 standard downhill elbow joint included	NXWCS1000	682,50	1
Flat 1250A sandwich 500 x 500 standard downhill elbow joint included	NXWCS1250	819,00	1
Flat 1600A sandwich 500 x 500 standard downhill elbow joint included	NXWCS1600	903,00	1



DESCRIZIONE	CODICE	€	PZ. CONF
Flat 2000A sandwich 500 x 500 standard downhill elbow joint included	NXWCS2000	1323,00	1
Flat 2500A sandwich 500 x 500 standard downhill elbow joint included	NXWCS2500	1554,00	1
Flat 3200A sandwich 500 x 500 standard downhill elbow joint included	NXWCS3200	2289,00	1
Flat 4000A sandwich 500 x 500 standard downhill elbow joint included	NXWCS4000	2976,00	1
Sandwich 800A cable tap off end	NXWFEB800	1227,55	1
Sandwich 1000A cable tap off end	NXWFEB1000	1279,00	1
Sandwich 1250A cable tap off end	NXWFEB1250	1338,00	1
Sandwich 1600A cable tap off end	NXWFEB1600	1436,50	1
Sandwich 2000A cable tap off end	NXWFEB2000	1543,60	1
Sandwich 2500A cable tap off end	NXWFEB2500	1793,50	1
Sandwich 3200A cable tap off end	NXWFEB3200	2310,00	1
Sandwich 4000A cable tap off end	NXWFEB4000	2925,50	1
Sandwich 800A Cable tap box center	NXWFECB800	1473,00	1
Sandwich 1000A Cable tap box center	NXWFECB1000	1535,00	1
Sandwich 1250A Cable tap box center	NXWFECB1250	1605,00	1
Sandwich 1600A Cable tap box center	NXWFECB1600	1724,00	1
Sandwich 2000A Cable tap box center	NXWFECB2000	1852,30	1
Sandwich 2500A Cable tap box center	NXWFECB2500	2152,20	1
Sandwich 3200A Cable tap box center	NXWFECB3200	2772,00	1
Sandwich 4000A Cable tap box center	NXWFECB4000	3510,60	1
Sandwich element 500 x 500 x 500 rating 800A joint included	NXWT800	1376,50	1
Sandwich element 500 x 500 x 500 rating 1000A joint included	NXWT1000	1449,00	1
Sandwich element 500 x 500 x 500 rating 1250A joint included	NXWT1250	1848,00	1
Sandwich element 500 x 500 x 500 rating 1600A joint included	NXWT1600	2058,00	1
Sandwich element 500 x 500 x 500 rating 2000A joint included	NXWT2000	2394,00	1
Sandwich element 500 x 500 x 500 rating 2500A joint included	NXWT2500	2772,00	1
Sandwich element 500 x 500 x 500 rating 3200A joint included	NXWT3200	3276,00	1
Sandwich element 500 x 500 x 500 rating 4000A joint included	NXWT4000	4259,00	1
160A fused tap off	FOX160F	420,00	1
250A fused tap off	FOX250F	480,00	1
400A fused tap off	FOX400F	680,00	1
630A fused tap off	FOX630F	1040,00	1
160A tap off prepared for MCCB	FOX160MCCB	380,00	1
250A tap off prepared for MCCB	FOX250MCCB	460,00	1
400A tap off prepared for MCCB	FOX400MCCB	540,00	1
630A tap off prepared for MCCB	FOX630MCCB	980,00	1

COD.	€	PAG.
BA25A30	38,00	1
BA25A106	24,00	1
BA25A302	37,00	1
BA25A306	54,00	1
BA25A3065S	57,00	1
BA40A30	56,00	1
BA40A106	35,00	1
BA40A302	42,00	1
BA40A306	76,00	1
BA40A3065S	82,00	1
BA63A30	82,00	1
BA63A106	38,00	1
BM25A30	36,00	1
BM25A30N	32,00	1
*BM25A104	18,00	1
*BM25A106	20,00	1
BM25A30	36,00	1
BM25A306	52,00	1
BM25A30N	32,00	1
BM25A30N1	35,00	1
*BM40A106	26,00	1
BM40A30	55,00	1
BM40A306	76,00	1
BM40A3065S	80,00	1
*BM63A104	30,00	1
BM63A106	32,00	1
BM63A30	81,00	1
SM10A	7,88	2
SM16A	12,60	2
SM10ACR	8,93	2
SM10ACG	8,93	2
SM10ACB	8,93	2
SM10ACV	8,93	2
SBM6A	16,80	2
SBM16A	24,15	2
SBM16A4	27,30	2
SFIP55CR	16,80	2
SFIP55CG	16,80	2
SFIP55CB	16,80	2
SFIP	14,70	2
CMSFM	2,63	2
CMCF	4,20	2
CMCF16	4,73	2
CMSF16	4,73	2
CPF1508	2,73	2
CPF1515	3,57	2
CPM1508	2,63	2
CPM1515	3,47	2
CM2515	8,93	2
CM2530	14,70	2
IFSR*	0,32	2
IFSG*	0,32	2
IFSB*	0,32	2
IFSV*	0,32	2

COD.	€	PAG.
TOIP41	0,84	2
GRIP55	1,05	2
CTIP55	4,20	2
ATX25A	27,30	3
ATDX25A	33,60	3
ATX25A6	39,90	3
ATDX25A6	47,25	3
ATX25A6C	39,90	3
ATDX25A6C	47,25	3
ATX40A6	53,55	3
ATDX40A6	65,10	3
ATX63A	58,80	3
ATDX63A	67,20	3
GFX25A	100,80	3
GFX25A6	107,10	3
GFX40A6	136,50	3
AC25A	77,70	3
AC25A6	102,90	3
AC40A	147,00	3
AC40AG	161,70	3
MTCFM25A6	98,00	3
MTCFM40A6	140,00	3
MTCFM63A6	154,00	3
MTX25A	25,20	3
MTDX25A	33,60	3
MTX25A6	39,90	3
MTDX25A6	46,20	3
MTX40A	48,30	3
MTDX40A	52,50	3
MTX40A6	52,50	3
MTDX40A6	65,10	3
MTX63A	58,80	3
MTDX63A	67,20	3
MGFX25A	100,80	3
MFLX25A6	102,90	3
MFLX40A6	142,80	3
MFLX63A6	168,00	3
MTCF25A6	92,40	3
MTCF40A6	168,00	3
MTCF63A4	252,00	3
STCA	4,41	4
STCAA	6,51	4
STCAD	6,30	4
STCAP	4,73	4
STCAPD	3,50	4
STCM	3,68	4
STCMC	7,14	4
STCMF	4,20	4
STCMM	4,00	4
STCMS	3,68	4
STCMSA	6,30	4
STCMSD	6,30	4
STCMSF	4,20	4
STCMSV	5,04	4

COD.	€	PAG.
STCMVS	4,50	4
CMA	0,89	4
CP18	4,20	4
CP18G	2,31	4
GRFP	3,99	4
GRFPM	3,00	4
HF12EF	7,88	4
HF13EF	9,45	4
ST8	1,05	4
STCBD	4,10	4
STCI	2,31	4
STLN	2,73	4
STM	4,20	4
STMF	3,15	4
STSAF	3,57	4
STSF	1,05	4
TB10	1,58	4
AA000	79,80	5
CASN25001	6,09	5
CASN35001	6,93	5
CASA10025	12,60	5
CASA10035	12,08	5
CAST25001	8,40	5
CAST35001	9,66	5
MARS25001	3,15	5
MARS35001	3,57	5
MADS25001	3,57	5
EGFL40035	12,60	5
C5PI25001	9,98	5
C5PI35001	9,98	5
C5SA25001	9,98	5
C5SA35001	9,98	5
DEPL25001	15,75	5
DEPL35001	15,75	5
BTIC25001	9,45	5
BTIC35001	9,45	5
BXSP01	18,38	5
BXSP04	48,83	5
BXSP09	57,75	5
BXPA01	22,05	5
BXPA02	38,85	5
BXPA03	50,40	5
BXPA06	79,80	5
CSSP01	18,90	5
CSSP02	33,60	5
CSSP03	48,30	5
CBX01 ACC	29,40	5
CBX04 ACC	51,45	5
CBX09 ACC	90,30	5
CBX01 OTT	40,95	5
CBX04 OTT	72,45	5
CBX09 OTT	142,80	5
CCS01ACC	27,30	5
CCS02ACC	39,90	5



COD.	€	PAG.
CCS03ACC	48,30	5
CCS01OTT	40,95	5
CCS02OTT	50,40	5
CCS03OTT	75,60	5
TRPA	26,46	5
TRGA	32,76	5
TRSG	88,20	5
TRSP	58,34	5
TRST	46,62	5
VC035	5,04	6
VC050	5,04	6
VC070	5,04	6
VC0100	7,56	6
TAP35PVC	5,95	6
TAP60PVC	5,95	6
TAP100PVC	9,26	6
PC01ACC	29,40	6
PC02ACC	40,95	6
PC03ACC	51,45	6
PC01OTT	40,95	6
PC02OTT	50,40	6
PC03OTT	79,80	6
PFT01	25,73	6
TOTEM A	171,01	6
TOTEM B	183,09	6
TOTEM C	109,61	6
TOTEM D	121,97	6
BP40A30	80,00	7
BP40A10	38,00	7
BP63A30	86,00	7
BP63A10	40,00	7
BP100A30	142,00	7
BP100A10	58,00	7
BP160A30	168,00	7
BP160A10	78,00	7
BPK250A30	210,00	7
BPK250A10	140,00	7
BPK315A30	290,00	7
BPK315A10	160,00	7
BPK400A30	320,00	7
BPK400A10	180,00	7
BPG250A30	242,00	7
BPG250A10	148,00	7
BPG315A30	325,00	7
BPG315A10	175,00	7
BPG400A30	360,00	7
BPG400A10	184,00	7
BPG500A30	420,00	7
BPG500A10	199,00	7
BPG630A30	520,00	7
BPG630A10	270,00	7
BPGG800A30	730,00	7
BPGG800A10	410,00	7
BPGG1000A30	880,00	7

COD.	€	PAG.
BPGG1000A10	435,00	7
BPGG1250A30	980,00	7
BPGG1250A10	485,00	7
TASX63A	75,60	8
TADX63A	82,95	8
TASX100A	107,10	8
TADX100A	121,80	8
TASX160A	140,70	8
TADX160A	165,90	8
TADXM40/63A	82,95	8
TASXM40/63A	75,60	8
TASXM160A	140,70	8
TADXM160A	165,90	8
TASX400A	275,10	8
TADX400A	312,90	8
TASX630A	564,17	8
TASX1000A	666,75	8
TADX1000A	736,09	8
TASXBPK400	231,00	8
TADXBPK400	273,00	8
TADXMCB250	a richiesta	8
TADXMCB400	a richiesta	8
TADXMCB500	a richiesta	8
TADXMCB630	a richiesta	8
TADXMCB1000	a richiesta	8
ACPWP	144,90	8
ACPWG	357,63	8
BPTF	315,00	8
BPGTF	315,00	8
BPGGTF	315,00	8
FLX100A	252,00	8
FLX250A	567,00	8
FLX400A	672,00	8
FLX630A	840,00	8
FLX1000A	1438,50	8
FLXK400A	577,50	8
CAT16	29,40	9
CAT16F	35,70	9
CAT16MF1	36,60	9
CAT16MF2	36,60	9
CAT16MF3	36,60	9
CAT32	37,80	9
CAT32F	44,10	9
CAT32SD	42,00	9
CAT32SDM	44,10	9
CAT32D	50,40	9
CAT32DM	50,40	9
BULL32SD	62,00	9
BULL32D	64,00	9
BULL32DT	68,00	9
BULL16F	54,60	9
BULL32F	67,20	9
BULL50F	73,50	9
BULL100F	168,00	9

COD.	€	PAG.
BULL63SDM	75,60	9
BULL63D	77,70	9
BULL63SD	73,50	9
SUPERCAT50F	95,00	9
SUPERCAT100F	145,00	9
SUPERCAT160F	240,00	9
SUPERCAT63D	100,00	9
SUPERCAT160D	240,00	9
SUPERCATCEE	a richiesta	9
STAR100F	168,00	9
STAR125F	199,50	9
STAR160F	273,00	9
STAR63SD	102,90	9
STAR63D	113,40	9
STAR100SD	165,90	9
STAR100D	176,40	9
STAR160D	273,00	9
STAR160DM	300,00	10
STAR200DM	399,00	10
STAR250F	630,00	10
STAR300DM	483,00	10
STAR S1	a richiesta	10
STAR S2	a richiesta	10
QBPG400	220,00	10
QBPG630	280,00	10
QBPGG1000	340,00	10
QBPGG1250	440,00	10
CSBPG400	a richiesta	10
CSBPG630	a richiesta	10
CSBPGG1000	a richiesta	10
CSBPGG1250	a richiesta	10
CPBPG400	a richiesta	10
CPBPG630	a richiesta	10
CPBPGG1000	a richiesta	10
CPBPGG1250	a richiesta	10
IP55BPR	8,40	10
IP55BRG	10,50	10
IP55 OT	4,41	10
IP55OTG	5,25	10
STP	6,30	10
SBRK	8,40	10
SBPK	12,60	10
STPG	15,75	10
STSG	18,90	10
STSGG	39,90	10
STCGG	44,10	10
SPVSP	42,00	10
SPVSK	48,30	10
SPVSG	51,45	10
SPVSGG	67,20	10
SPVBPG	86,00	10
STPP	9,45	10
STSL	16,80	10
STCIP	4,41	10

COD.	€	PAG.
STPD	6,30	10
PRPK02	4,20	10
PRPK03	5,25	10
PRPK05	7,35	10
PRPK10	16,80	10
STK	4,20	11
CTUSX40/250A	50,00	11
CTUDX40/250A	50,00	11
CTUSXG250/630A	70,00	11
CTUDXG250/630A	70,00	11
CTUSXK250/400A	40,00	11
CTUDXK250/400A	40,00	11
CTUSXGG1000/1250A	80,00	11
CTUDXGG1000/1250A	80,00	11
NXW800FE	798,00	11
NXW1000FE	840,00	11
NXW1250FE	900,00	11
NXW1600FE	1080,00	11
NXW2000FE	1400,00	11
NXW2500FE	1600,00	11
NXW3200FE	1900,00	11
NXW4000FE	2500,00	11
NXW800PI	931,00	11
NXW1000PI	980,00	11
NXW1250PI	1060,00	11
NXW1600PI	1240,00	11
NXW2000PI	1550,00	11
NXW2500PI	1760,00	11
NXW3200PI	2080,00	11
NXW4000PI	2704,00	11
NXWAT800	1396,50	11
NXWAT1000	1470,00	11
NXWAT1250	1554,00	11
NXWAT1600	1695,00	11
NXWAT2000	1848,00	11
NXWAT2500	2205,00	11
NXWAT3200	2940,00	11
NXWAT4000	3822,00	11
NXWATSC800	977,55	11
NXWATSC1000	1029,00	11
NXWATSC1250	1088,00	11
NXWATSC1600	1186,50	12
NXWATSC2000	1293,60	12
NXWATSC2500	1543,50	12
NXWATSC3200	2060,00	12
NXWATSC4000	2675,50	12
NXWATST800	20,00	12
NXWATST1000	22,00	12
NXWATST1250	24,20	12
NXWATST1600	26,60	12
NXWATST2000	29,30	12
NXWATST2500	31,00	12
NXWATST3200	32,00	12
NXWATST4000	34,00	12

COD.	€	PAG.
NXWATST5000	38,00	12
NXWCD800	648,50	12
NXWCD1000	682,50	12
NXWCD1250	819,00	12
NXWCD800	648,50	12
NXWCD1000	682,50	12
NXWCD1250	819,00	12
NXWCD1600	903,00	12
NXWCD2000	1323,00	12
NXWCD2500	1554,00	12
NXWCD3200	2289,00	12
NXWCD4000	2976,00	12
NXWCPD800	648,50	12
NXWCPD1000	682,50	12
NXWCPD1250	819,00	12
NXWCPD1600	903,00	12
NXWCPD2000	1323,00	12
NXWCPD2500	1554,00	12
NXWCPD3200	2289,00	12
NXWCPD4000	2976,00	12
NXWCS800	648,50	12
NXWCS1000	682,50	12
NXWCS1250	819,00	12
NXWCS1600	903,00	12
NXWCS2000	1323,00	13
NXWCS2500	1554,00	13
NXWCS3200	2289,00	13
NXWCS4000	2976,00	13
NXWFEB800	1227,55	13
NXWFEB1000	1279,00	13
NXWFEB1250	1338,00	13
NXWFEB1600	1436,50	13
NXWFEB2000	1543,60	13
NXWFEB2500	1793,50	13
NXWFEB3200	2310,00	13
NXWFEB4000	2925,50	13
NXWFECB800	1473,00	13
NXWFECB1000	1535,00	13
NXWFECB1250	1605,00	13
NXWFECB1600	1724,00	13
NXWFECB2000	1852,30	13
NXWFECB2500	2152,20	13
NXWFECB3200	2772,00	13
NXWFECB4000	3510,60	13
NXWT800	1376,50	13
NXWT1000	1449,00	13
NXWT1250	1848,00	13
NXWT1600	2058,00	13
NXWT2000	2394,00	13
NXWT2500	2772,00	13
NXWT3200	3276,00	13
NXWT4000	4259,00	13
NXWUR	on request	11
FOX160F	420,00	13

COD.	€	PAG.
FOX250F	480,00	13
FOX400F	680,00	13
FOX630F	1040,00	13
FOX160MCCB	380,00	13
FOX250MCCB	460,00	13
FOX400MCCB	540,00	13
FOX630MCCB	980,00	13

NAXSOLUX

Rated Current	In [A]	25	40	63
Dimensions	mm	50 x 18	50 x 18	50 x 18
Rated operational voltage	Ue [V]	400	400	400
Rated insulation voltage	Ui [V]	690	690	690
Frequency	f [Hz]	50/60	50/60	50/60
Rated short time withstand current (1s)	Icw [kA]RMS	3	3,3	3,6
Peak Current	Ipk [kA]	4,5	5	5,4
Phase resistance at 20°C	R20 [mΩ/m]	6,19	2,96	2,31
Phase reactance (50Hz)	X1 [mΩ/m]	1,3	0,62	0,49
Phase impedance	Z1 [mΩ/m]	8,15	3,9	3,04
Phase resistance at thermal conditions	R1[mΩ/m]	8,05	3,85	3
Pe resistance	RPE [mΩ/m]	1,32	1,32	1,32
Fault loop resistance phase/N	RFN [mΩ/m]	14,24	6,81	5,31
Fault loop reactance phase/N	XFN [mΩ/m]	1,3	0,62	0,49
Fault loop impedance phase/N	ZFN [mΩ/m]	14,3	6,84	5,34
Fault loop resistance phase/PE	RFPE [mΩ/m]	8,26	4,71	3,99
Fault loop reactance phase/PE	XFPE [mΩ/m]	1,89	1,08	0,91
Fault loop impedance phase/PE	ZFPE [mΩ/m]	8,47	4,83	4,1
	$\Delta V[V/m/A] 10^{-3} \cos \varphi = 0,70$	5,68	2,72	2,12
	$\Delta V[V/m/A] 10^{-3} \cos \varphi = 0,75$	5,97	2,86	2,23
	$\Delta V[V/m/A] 10^{-3} \cos \varphi = 0,80$	6,25	2,99	2,33
Voltage Drop with distributed load	$\Delta V[V/m/A] 10^{-3} \cos \varphi = 0,85$	6,52	3,12	2,43
	$\Delta V[V/m/A] 10^{-3} \cos \varphi = 0,90$	6,76	3,23	2,52
	$\Delta V[V/m/A] 10^{-3} \cos \varphi = 0,95$	5,44	2,6	2,6
	$\Delta V[V/m/A] 10^{-3} \cos \varphi = 1,00$	6,97	3,33	2,6
Weight	p [kg/m]	0,65	0,7	0,77
Degree of protection	IP	41/55	41/55	41/55
Losses for the joule effect at rated current	P [W/m]	5	6	12
Temperature range		-5° + 40°	-5° + 40°	-5° + 40°

ALL THESE PRODUCTS ARE COMPLIANCE TO STANDARDS IEC 60439 -1 and 2
 ALL THESE PRODUCTS HAVE BEEN CERTIFIED AT IMQ INSTITUTE IN MILAN

NAXSOPOWER BP

Rated Current	In [A]	40	63	100	160	250
Dimensions	mm	70 x 30	70 x 30	70 x 30	70 x 30	70 x 30
Rated operational voltage	Ue [V]	800	800	800	800	800
Rated insulation voltage	Ui [V]	800	800	800	800	800
Frequency	f [Hz]	50/60	50/60	50/60	50/60	50/60
Rated short time withstand current (1s)	Icw [kA]RMS	6	6	10	10	14
Peak Current	Ipk [kA]	9	9	17	17	28
Phase resistance at 20° C	R20 [mΩ/m]	1,301	0,906	0,871	0,61	0,324
Phase reactance (50Hz)	X1 [mΩ/m]	0,346	0,308	0,308	0,205	0,199
Phase impedance	Z1 [mΩ/m]	1,854	1,305	1,258	0,878	0,466
Phase resistance at thermal conditions	R1[mΩ/m]	1,821	1,268	1,219	0,854	0,421
Pe resistance	RPE [mΩ/m]	0,155	0,155	0,155	0,155	0,155
Fault loop resistance phase/N	RFN [mΩ/m]	2,732	2,084	2,003	1,403	0,745
Fault loop reactance phase/N	XFN [mΩ/m]	0,391	0,391	0,363	0,274	0,274
Fault loop impedance phase/N	ZFN [mΩ/m]	2,76	2,12	2,036	1,43	0,794
Fault loop resistance phase/PE	RFPE [mΩ/m]	1,602	1,167	1,129	0,842	0,527
Fault loop reactance phase/PE	XFPE [mΩ/m]	0,278	0,278	0,278	0,278	0,157
Fault loop impedance phase/PE	ZFPE [mΩ/m]	1,626	1,2	1,162	0,886	0,55
	$\Delta V[V/m/A] 10^{-3} \cos \varphi = 0,70$	1,318	0,959	0,93	0,644	0,378
	$\Delta V[V/m/A] 10^{-3} \cos \varphi = 0,75$	1,381	1	0,968	0,672	0,388
	$\Delta V[V/m/A] 10^{-3} \cos \varphi = 0,80$	1,442	1,039	1,005	0,698	0,395
Voltage Drop with distributed load	$\Delta V[V/m/A] 10^{-3} \cos \varphi = 0,85$	1,499	1,074	1,038	0,722	0,401
	$\Delta V[V/m/A] 10^{-3} \cos \varphi = 0,90$	1,55	1,105	1,067	0,743	0,403
	$\Delta V[V/m/A] 10^{-3} \cos \varphi = 0,95$	1,592	1,127	1,087	0,758	0,4
	$\Delta V[V/m/A] 10^{-3} \cos \varphi = 1,00$	1,577	1,098	1,056	0,74	0,365
Weight	p [kg/m]	2,2	2,3	2,5	2,8	4,2
Degree of protection	IP	41/55	41/55	41/55	41/55	41/55
Losses for the joule effect at rated current	P [W/m]	9	15	37	66	79
Temperature range		-5° + 40°	-5° + 40°	-5° + 40°	-5° + 40°	-5° + 40°

ALL THESE PRODUCTS ARE COMPLIANCE TO STANDARDS IEC 60439 -1 and 2
 ALL THESE PRODUCTS HAVE BEEN CERTIFIED AT IMQ INSTITUTE IN MILAN

NAXSOPOWER BPK

Rated Current	In [A]	250	315	400
Dimensions	mm	77 x 70	77 x 70	77 x 70
Rated operational voltage	Ue [V]	800	800	800
Rated insulation voltage	Ui [V]	800	800	800
Frequency	f [Hz]	50/60	50/60	50/60
Rated short time withstand current (1s)	Icw [kA]RMS	10	13	18
Peak Current	Ipk [kA]	15	25	35
Phase resistance at 20° C 20°C	R20 [mΩ/m]	0,200	0,150	0,150
Phase reactance (@50Hz)	X1 [mΩ/m]	0,060	0,060	0,060
Phase impedance	Z1 [mΩ/m]	0,210	0,180	0,160
Phase resistance at thermal conditions	R1[mΩ/m]	0,280	0,240	0,210
Pe resistance	RPE [mΩ/m]	0,093	0,093	0,093
Fault loop resistance phase/N	RFN [mΩ/m]	0,525	0,452	0,364
Fault loop reactance phase/N	XFN [mΩ/m]	0,072	0,072	0,072
Fault loop impedance phase/N	ZFN [mΩ/m]	0,530	0,450	0,371
Fault loop resistance phase/PE	RFPE [mΩ/m]	0,458	0,412	0,338
Fault loop reactance phase/PE	XFPE [mΩ/m]	0,270	0,270	0,270
Fault loop impedance phase/PE	ZFPE [mΩ/m]	0,530	0,495	0,473
	$\Delta V[V/m/A] 10^{-3} \cos \Phi = 0,70$	0,230	0,195	0,172
	$\Delta V[V/m/A] 10^{-3} \cos \Phi = 0,75$	0,237	0,202	0,179
	$\Delta V[V/m/A] 10^{-3} \cos \Phi = 0,80$	0,244	0,209	0,186
Voltage Drop with distributed load	$\Delta V[V/m/A] 10^{-3} \cos \Phi = 0,85$	0,250	0,215	0,192
	$\Delta V[V/m/A] 10^{-3} \cos \Phi = 0,90$	0,256	0,221	0,198
	$\Delta V[V/m/A] 10^{-3} \cos \Phi = 0,95$	0,260	0,225	0,204
	$\Delta V[V/m/A] 10^{-3} \cos \Phi = 1,00$	0,257	0,223	0,201
Weight	p [kg/m]	4,2	4,5	4,5
Degree of protection	IP	41/55	41/55	41/55
Losses for the joule effect at rated current	P [W/m]	48	63	69
Temperature range		-5° + 40°	-5° + 40°	-5° + 40°

ALL THESE PRODUCTS ARE COMPLIANCE TO STANDARDS IEC 60439 -1 and 2
 ALL THESE PRODUCTS HAVE BEEN CERTIFIED AT IMQ INSTITUTE IN MILAN

NAXSOPOWER BPG/BPGG

Rated Current	In [A]	250	315	400	500	630	800	1000
Dimensions	mm	120x70	120x70	120x70	120x70	120x70	230x70	230x70
Rated operational voltage	Ue [V]	800	800	800	800	800	800	800
Rated insulation voltage	Ui [V]	800	800	800	800	800	800	800
Frequency	f [Hz]	50/60	50/60	50/60	50/60	50/60	50/60	50/60
Rated short time withstand current (1s)	Icw [kA]RMS	10	17	30	40	40	50	50
Peak Current	Ipk [kA]	20	34	63	84	84	105	105
Phase resistance at 20° C	R20 [mΩ/m]	0,155	0,145	0,087	0,077	0,076	0,047	0,041
Phase reactance (50Hz)	X1 [mΩ/m]	0,047	0,047	0,045	0,045	0,043	0,035	0,035
Phase impedance	Z1 [mΩ/m]	0,222	0,208	0,13	0,117	0,115	0,075	0,067
Phase resistance at thermal conditions	R1[mΩ/m]	0,217	0,203	0,122	0,108	0,106	0,066	0,057
Pe resistance	RPE [mΩ/m]	0,051	0,051	0,051	0,051	0,051	0,051	0,051
Fault loop resistance phase/N	RFN [mΩ/m]	0,326	0,305	0,183	0,162	0,16	0,099	0,086
Fault loop reactance phase/N	XFN [mΩ/m]	0,045	0,045	0,042	0,042	0,04	0,032	0,032
Fault loop impedance phase/N	ZFN [mΩ/m]	0,329	0,308	0,187	0,167	0,165	0,104	0,092
Fault loop resistance phase/PE	RFPE [mΩ/m]	0,227	0,216	0,152	0,141	0,14	0,07	0,064
Fault loop reactance phase/PE	XFPE [mΩ/m]	0,123	0,123	0,115	0,115	0,115	0,102	0,102
Fault loop impedance phase/PE	ZFPE [mΩ/m]	0,258	0,248	0,19	0,182	0,181	0,124	0,12
	$\Delta V[V/m/A] 10^{-3} \cos \varphi = 0,70$	0,161	0,152	0,102	0,093	0,091	0,062	0,056
	$\Delta V[V/m/A] 10^{-3} \cos \varphi = 0,75$	0,168	0,159	0,105	0,096	0,094	0,063	0,057
	$\Delta V[V/m/A] 10^{-3} \cos \varphi = 0,80$	0,175	0,165	0,108	0,098	0,096	0,064	0,058
	$\Delta V[V/m/A] 10^{-3} \cos \varphi = 0,85$	0,181	0,171	0,11	0,1	0,098	0,064	0,058
	$\Delta V[V/m/A] 10^{-3} \cos \varphi = 0,90$	0,187	0,176	0,112	0,101	0,099	0,064	0,058
	$\Delta V[V/m/A] 10^{-3} \cos \varphi = 0,95$	0,191	0,18	0,112	0,101	0,099	0,064	0,057
	$\Delta V[V/m/A] 10^{-3} \cos \varphi = 1,00$	0,188	0,176	0,105	0,093	0,092	0,057	0,05
Weight	p [kg/m]	5	5,5	6	6,5	7,5	10	15
Degree of protection	IP	41/55	41/55	41/55	41/55	41/55	41/55	41/55
Losses for the joule effect at rated current	P [W/m] (trifase)	41	60	58	81	127	126	172
Temperature range		-5°+ 40°	-5°+ 40°	-5°+ 40°	-5°+ 40°	-5°+ 40°	-5°+ 40°	-5°+ 40°

ALL THESE PRODUCTS ARE COMPLIANCE TO STANDARDS IEC 60439 -1 and 2
 ALL THESE PRODUCTS HAVE BEEN CERTIFIED AT IMQ INSTITUTE IN MILAN

NAXSOSANDWICH

Rated current	In [A]	500	800	1000	1250	1600	2000	2500	3200	4000	5000	6300
Dimensions	mm	185x160	185x160	200x125	200x125	200x175	200x195	200x251	200x315	200x360	200x475	200x646
Number of conductors / section	mm ² *	1x300	1x700	1x750	1x820	1x1300	1x1500	1x2000	1x2700	1x3000	2x2000	2x2700
Rated operational voltage	Ue [V]	1000	1000	1000	1000	1000	1000	1000	1000	1000	1000	1000
Rated insulation voltage	Ui [V]	1000	1000	1000	1000	1000	1000	1000	1000	1000	1000	1000
Frequency	f [Hz]	50/60	50/60	50/60	50/60	50/60	50/60	50/60	50/60	50/60	50/60	50/60
Rated short time withstand current (0,1s)	Icw [kA]	40	50	50	50	70	70	70	70	70	70	70
Peak Current	Ipk [kA]	84	105	105	105	154	154	154	154	154	154	154
Phase resistance at 20°C	R20 [mΩ/m]	0,077	0,047	0,041	0,041	0,028	0,026	0,018	0,014	0,012	0,011	0,007
Phase reactance (@50Hz)	X1 [mΩ/m]	0,045	0,035	0,020	0,020	0,015	0,013	0,010	0,009	0,007	0,005	0,004
Phase impedance	Z1 [mΩ/m]	0,117	0,075	0,067	0,067	0,064	0,060	0,041	0,032	0,028	0,025	0,016
Phase resistance at thermal condition	R1 [mΩ/m]	0,108	0,066	0,050	0,048	0,039	0,028	0,025	0,018	0,012	0,010	0,009
Pe resistance	RPE [mΩ/m]	0,051	0,051	0,051	0,051	0,018	0,013	0,013	0,013	0,013	0,013	0,012
Fault loop resistance phase - N	RFN [mΩ/m]	0,162	0,099	0,086	0,086	0,059	0,055	0,038	0,029	0,025	0,023	0,015
Fault loop reactance phase - N	XFN [mΩ/m]	0,169	0,154	0,140	0,128	0,117	0,108	0,075	0,058	0,051	0,046	0,030
Fault loop impedance phase - N	ZFN [mΩ/m]	0,234	0,183	0,164	0,154	0,131	0,121	0,084	0,065	0,059	0,051	0,035
Fault loop resistance phase - PE	RFPE [mΩ/m]	0,141	0,070	0,064	0,064	0,051	0,043	0,034	0,030	0,028	0,026	0,017
Fault loop reactance phase - PE	XFPE [mΩ/m]	0,115	0,102	0,102	0,102	0,100	0,085	0,068	0,059	0,055	0,052	0,032
Fault loop impedance phase - PE	ZFPE [mΩ/m]	0,182	0,124	0,120	0,120	0,112	0,095	0,076	0,066	0,063	0,059	0,035
	$\Delta V[V/m/A]$ 10-3 $\cos \varphi = 0,70$	0,093	0,062	0,056	0,056	0,052	0,047	0,033	0,026	0,023	0,020	0,015
	$\Delta V[V/m/A]$ 10-3 $\cos \varphi = 0,75$	0,096	0,063	0,057	0,057	0,050	0,046	0,032	0,025	0,021	0,020	0,013
	$\Delta V[V/m/A]$ 10-3 $\cos \varphi = 0,80$	0,098	0,064	0,058	0,058	0,048	0,045	0,031	0,024	0,022	0,019	0,012
Voltage Drop with distributed load	$\Delta V[V/m/A]$ 10-3 $\cos \varphi = 0,85$	0,100	0,064	0,058	0,058	0,046	0,042	0,030	0,010	0,015	0,018	0,006
	$\Delta V[V/m/A]$ 10-3 $\cos \varphi = 0,90$	0,101	0,064	0,058	0,058	0,043	0,040	0,028	0,021	0,019	0,017	0,010
	$\Delta V[V/m/A]$ 10-3 $\cos \varphi = 0,95$	0,101	0,064	0,057	0,057	0,038	0,044	0,025	0,019	0,016	0,015	0,009
	$\Delta V[V/m/A]$ 10-3 $\cos \varphi = 1,00$	0,093	0,057	0,050	0,050	0,024	0,023	0,016	0,012	0,011	0,010	0,007
Weight	p [kg/m]	6,5	10	15	15	24	29	32	42	49	54	80
Degree of protection	IP	41/55	41/55	41/55	41/55	41/55	41/55	41/55	41/55	41/55	41/55	41/55
Losses for the joule effect at rated current	P [W/m]	81	126	150	225	300	336	470	550	576	750	1000
Temperature range		-5+40°C	-5+40°C	-5+40°C	-5+40°C	-5+40°C	-5+40°C	-5+40°C	-5+40°C	-5+40°C	-5+40°C	-5+40°C
Number of Joint bolts 12 MA		1	1	1	1	2	2	3	3	3	6	6
Insulation materials of the joint	poliammide v0 filled fiber glass 30 % temperature > 200 celsius											
Conductors insulation	nomek dmac temperature > 230 celsius											
Windows when plug in	poliammide v0 filled fiber glass 30 % temperature > 200 celsius											
Sandwich busbar housing	galvanized sendzimir 270 gr steel 2 mm thick											

ALL THESE PRODUCTS ARE COMPLIANCE TO STANDARDS IEC 60439 -1 and 2
 ALL THESE PRODUCTS HAVE BEEN CERTIFIED AT IMQ INSTITUTE IN MILAN

ALUMINIUM

EN AW-AMgSi
UNI EN 573-3 (6060)

Composizione chimica percentuale									
Mg	Si	Fe	Ti	Cu	Cr	Mn	Zn	Altri elementi max	Al
0,35-0,60	0,30-0,60	0,10-0,30	0,10	0,10	0,05	0,10	0,15	0,05-0,15	97,9
Caratteristiche principali									
Estrudibilità eccellente. Lega di media durezza adatta per estrusi difficili. Alta resistenza alla corrosione. Buona formabilità allo stato TaN. Buona finitura superficiale. Saldabilità buona.									
Usi tipici									
Applicazioni architettoniche e decorative. Profili per serramenti. Industria chimica.									
Caratteristiche fisiche e generali									
Peso specifico	2,7 kg/dm ³			Calore specifico 0 -100 °C			≈ 0,92 J (g.k)		
Modulo di elasticità	66000 N/mm ²			Coeff. di dilatazione					
Modulo di rigidità	26500 N/mm ²			teorico lineare 20 -100 °C			23 x 10 ⁻⁶ x K ⁻¹		
Punto di fusione	605 °C			Conducibilità termica 20 °C			≈ 1,75 W (cm x k)		
				Resistance a 20 °C (T6)			≈ 3,25 μ Ω x cm		
Lega EN AW-6060 (Al MgSi)									
BARRA ESTRUSA			CARICO DI ROTTURA A TRAZIONE		CARICO AL LIMITE DI SNERVAMENTO		ALLUNGAMENTO		
Stato metallurgico	Dimensioni mm		R _m MPa		R _{p0,2} MPa		A %	A _{50 mm} %	
	D ¹⁾	S ²⁾	min.	max.	min.	max.	min.	min.	
T4 ⁵⁾	≤ 150	≤ 150	120	-	60	-	16	14	
T5	≤ 150	≤ 150	160	-	120	-	8	6	
T6 ⁵⁾	≤ 150	≤ 150	190	-	150	-	8	6	
TUBO ESTRUSO									
Stato metallurgico	Dimensioni mm e ³⁾		R _m MPa		R _{p0,2} MPa		A %	A _{50 mm} %	
			min	max	min	max.	min	min.	
T4 ⁵⁾	≤ 15		120	-	60	-	16	14	
T5	≤ 15		160	-	120	-	8	6	
T6 ⁵⁾	≤ 15		190	-	150	-	8	6	
PROFILATO ESTRUSO ¹⁰⁾									
Stato metallurgico	Dimensioni mm e ³⁾		R _m MPa		R _{p0,2} MPa		A %	A _{50 mm} %	
			min	max	min	max	min	min.	
T4 ⁵⁾	≤ 25		120	-	60	-	16	14	
	≤ 5		160	-	120	-	8	6	
T5	5 < e ≤ 25		140	-	100	-	8	6	
	≤ 3		190	-	150	-	8	6	
T6 ⁵⁾	3 < e ≤ 25		170	-	140	-	8	6	

ALUMINIUM

EN AW-A199.5
UNI EN 573-3 (1050A)

Composizione chimica percentuale								
Si	Fe	Cu	Mn	Mg	Zn	Ti	Altre impurità ciascuna	Al
0,25	0,4	0,05	0,05	0,05	0,07	0,05	0,03	99,5
Caratteristiche principali								
Eccellente resistenza alla corrosione. Eccellente conducibilità termica ed elettrica. Alta duttilità. Buona lucidità. Eccellente saldabilità. Eccellente anodizzazione e lavorazione plastica a freddo.								
Usi tipici								
Attrezzi e contenitori alimentari. Industria chimica. Tubi pieghevoli. Polveri pirotecniche.								
Caratteristiche fisiche e generali								
Peso specifico	2,7 kg/dm ³		Calore specifico 0 -100 °C		0,22 cal/g °C ⁻¹			
Modulo di elasticità	68600 N/mm ²		Coeff. di dilatazione		teorico lineare 20 -100 °C			
Modulo di rigidità	26500 N/mm ²		Conducibilità termica 20 °C		24 x 10 ⁻⁶ x K ⁻¹			
Punto di fusione	658 °C		Resistance a 20 °C (H18)		2,83±2,90 μ Ω x cm			
Lega EN AW-6060 (Al MgSi)								
BARRA ESTRUSA			CARICO DI ROTTURA A TRAZIONE		CARICO AL LIMITE DI SNERVAMENTO		ALLUNGAMENTO	
Stato metallurgico	Dimensioni mm		R_m MPa		$R_{p0,2}$ MPa		A %	$A_{50\text{ mm}}$ %
	D ¹⁾	S ²⁾	min.	max.	min.	max.	min.	min.
F ⁴⁾ , H112	tutte	tutte	60	-	20	-	25	23
O, H111	tutte	tutte	60	95	20	-	25	23
TUBO ESTRUSO								
Stato metallurgico	Dimensioni mm e ³⁾		R_m MPa		$R_{p0,2}$ MPa		A %	$A_{50\text{ mm}}$ %
			min	max	min	max.	min	min.
F ⁴⁾ , H112	tutte	tutte	60	-	20	-	25	23
O, H111	tutte	tutte	60	95	20	-	25	23
PROFILATO ESTRUSO ¹⁰⁾								
Stato metallurgico	Dimensioni mm e ³⁾		R_m MPa		$R_{p0,2}$ MPa		A %	$A_{50\text{ mm}}$ %
			min	max	min	max	min	min.
F ⁴⁾ , H112	tutte	tutte	60	-	20	-	25	23

MATERIAL	TAB A	POLIAMMIDE PA 66
----------	------------------	------------------

Issued: 25/02/2003

PROPERTY	STANDARD	UNIT	VALUE	TEST CONDITIONS
----------	----------	------	-------	-----------------

Mechanical Properties

TENSILE MODULUS	ISO 527-2/1 A	MPa	9100	DAM Test speed 1 mm/min
STRESS AT BREAK	ISO 527-2/1 A	MPa	125	DAM Test speed 1 mm/min
STRAIN AT BREAK	ISO 527-2/1 A	%	2.15	DAM Test speed 1 mm/min
FLEXURAL MODULUS	ISO 178 1 A	MPa	7800	DAM Test speed 1 mm/min
FLEXURAL STRENGTH	ISO 178 1 A	MPa	185	DAM Test speed 1 mm/min
CHARPY IMPACT STRENGTH	ISO 179 eU 23°C	KJ/m2	50	DAM
CHARPY NOTCHED IMPACT STRENGTH	ISO 179 eA	KJ/m2		DAM
TRACKING RESISTANCE	IEC 112 sol A IEC 112 sol B	V V		

Thermal Properties

MELTING TEMPERATURE	ISO 3146/C2	°C	260	Scanning rate 10°C/min
TEMPERATURE OF DEFLECTION UNDER LOAD	ISO 75-2/Af	°C	230	Max surface stress 1.8 MPa
VICAT SOFTENING TEMPERATURE	ISO 306/B50	°C	240	Load 50N Heating rate 50°C/h

Fire Behaviour

FLAMMABILITY	UL 94	mm/class	0.8/V-0*	
GLOW WIRE FLAMMABILITY INDEX	CEI 695-2-1/2	mm/°C	1.6/960	Conditioned 48h Standard atmosphere

Other Properties

DENSITY	ISO 3146	Kg/m3	1470	
---------	----------	-------	------	--

TECHNICAL DATA SHEET	TAB C RIGID PVC			
TEST	TEST METHOD	TEST CONDITION	UNIT OF MEASURE	TYPICAL VALUE
SPECIFIC GRAVITY	ISO 1183	23°C	Kg/dm3	1.55
HARDNESS	ISO 868	23°C	Shore D	78
VICAT TEMPERATURE	ISO 306	5 KG	°C	85
ULTIMATE TENSILE STRENGTH	ISO 527	23°C	N/mm2	30
ELONGATION AT BREAK	ISO 527	23°C	%	100
IZO D	ISO 180	23°C	J/m	65
FLAME RESISTANCE	UL 94	-	Class	VO

Properties Polipropilene	TAB B	Varie	Norm ASTM	DIN	ISO		Unit
Oxygen index	-	D 2863	-	-	30	%	
Glow wire test	IEO 695 2-1	VDE 0471 2-1	-	-	960	°C	
Needle flame test	IEO 695 2-2	-	-	-	YES	-	
Flame resistance	CSA C 22-2	-	-	-	-	-	
Electrical							
Volume resistivity	-	D 257	53482	-	-	Ohm · cm	
Surface resistivity	-	D 257	53482	-	-	Ohm	
Dielectric strenght	-	D 149	-	-	-	KV/mm	
Tracking resistance	ICE 112 sol A ICE 112 sol B	- -	- -	- -	> 600 > 600 M	V V	
Termal							
Operating temperature limit 20000 h / short time	ICE 216	-	-	-	100	°C	
Thermal coeff. of linear expansion	-	D 696	53752	-	6 · 10 - 5	K · 1	
Vicat softening point 9,8 N / 49 N	-	D 1525 D 1525	53460 53460	R 306 R 306	150 107	°C °C	
Heat distortion temperature 0,45 MN/m2/1,81 MN/m2	-	D 648 D 648	53461 53461	R 75 R 75	135 80	°C °C	
Ball penetration test	ICE 335 ICE 335	- -	- -	- -	YES NO	125°C 165°C	
Mechanical							
Tensile strenght at yield	-	D 638	53455	R 527	29	N/mm ²	
Elongation at yield	-	D 638	53455	R 527	10	%	
Flexural modulus	-	D 790	53457	R 178	3000	N/mm ²	
Flexural strnght	-	D 790	-	R 178	50	N/mm ²	
Notched impact strenght IZOD	-	D 256	-	R 180	3	KJ/m ²	
Notched impact strenght CHARPY	-	-	53453	R 179	-	KJ/m ²	
Physical							
Density	-	-	53479	R 1183	1,4	g/cc	
Linear mould shrinkage	-	-	-	-	1,2	%	
Water absorption	-	-	-	-	2/100	%	

IMQ

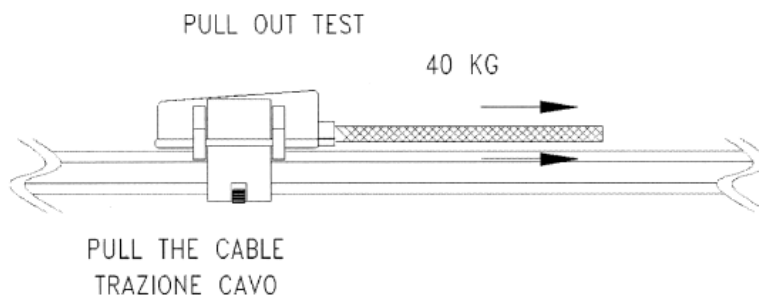
Test Report nr. 01FB00026/3

PRODUCT DEPARTMENT
LABORATORY INSULATED CABLES AND ADHESIVE TAPES

PAGE: 1 OF 3
DATE 2008/06/12

MEASUREMENT OF FORCE NEEDED TO PULL OUT THE CABLE FROM PLUG TYPE MOUSE

- Number of samples under test** 3
- Test operating mode**
 - The cable has been connected to the fix end of dinamometer while the plug to the mobile end of same apparatus.
 - A traction force, with 50 mm/sec speed, is applied to the plug until the disjunction of cable occurs.
- Test Apparatus** Dinamometer INSTRON type 4301 - IMQ_ID : P 00470
- Test Configuration** See Figure



Test Results The disjunction of electric cable from mouse plug has happened as soon as the force has got the value of 40 Kg

IMQ

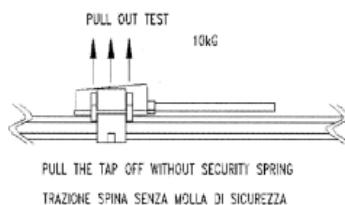
Test Report nr. 01FB00026/3

PRODUCT DEPARTMENT
LABORATORY INSULATED CABLES AND ADHESIVE TAPES

PAGE: 2 OF 3
DATE 2008/06/12

MEASUREMENT OF FORCE NEEDED TO PULL OUT THE CABLE FROM RECTILINEAR BUSBAR

- Number of samples under test** 3
- Test operating mode**
 - The Aluminium rectilinear busbar has been connected to the fix end of dinamometer while the plug to the mobile end of same apparatus.
 - A traction force, with 50 mm/sec speed, is applied to the plug until the disjunction of cable verifies
 - The assembly of security springs among plug clips has been intentionally omitted
- Test Apparatus** Dinamometer INSTRON type 4301 - IMQ_ID : P 00470
- Test Configuration** See Figure



Test Results The disjunction of electric cable from bar has happened as soon as the force has got the value of 10 Kg. The breakage of one of two clips has occurred.

IMQ

Test Report nr. 01FB00026/3

PRODUCT DEPARTMENT

PAGE: 3 OF 3

LABORATORY INSULATED CABLES AND ADHESIVE TAPES

DATE 2008/06/12

MEASUREMENT OF FORCE NEEDED TO PULL OUT THE PLUG FROM RECTILINEAR BUSBAR

Number of samples under test 3

Test operating mode

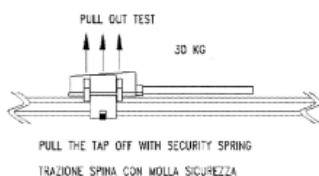
- The Aluminium rectilinear busbar has been connected to the fix end of dinamometer while the plug to the mobile end of same apparatus.
- A traction force, with 50 mm/sec speed, is applied to the plug until the disjunction of cable verifies
- During this test, the plug has been connected to bar, as requested from manufacturer, by a security spring placed among plug clips.

Test Apparatus

Dinamometer INSTRON type 4301 - IMQ_ID : P 00470

Test Configuration

See Figure



Test Results

The disjunction of plug from bar has happened as soon as the force has got the value of 30 Kg due to breakage of two clips and disjunction of security spring

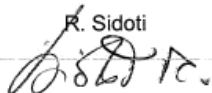

IMQ**Test Report nr.** 01SB00114**PRODUCT DEPARTMENT****PAGE 1 OF 4****LABORATORY INSULATED CABLES AND ADHESIVE TAPES****DATE 2008/06/12**

Product	Aluminium cable trunking with and without protective coating
Model type	--
Description	Sample in sendzimir plate Sample in aluminium of rectangular section Sample in aluminium anodized of rectangular section

Applicant	NAXSO S.r.l. - Via Quarello, 43 - 10135 TORINO
Manufacturer	NAXSO S.r.l. - Via Quarello, 43 - 10135 TORINO

Test carried out by	IMQ S.p.A - Laboratorio cavi isolati e nastri adesivi Via Quintiliano, 43 - 20138 Milano
Scope of the test	➤ To assess the resistance to the corrosion in salt mist atmosphere

Date of samples receiving	2002/02/06		
Date of tests start	2002/02/11	Date of tests end	2002/03/27
This test report is composed by	4 pages, divided as follows: 4 report pages		

Cable Testing Lab Technician	Cable Testing Lab Head
R. Sidoti 	B. Testa 
The results referred in this report are only relevant to the samples tested and described in this report. Only complete reproduction of this test report is permitted without written authorisation of IMQ.	

IMQ S.p.A. - Via Quintiliano 43 - 20138 MILANO

DECLARATION OF EC CONFORMITY

No. TL/Prot20209

The product

Type reference	Naxsolux 25A - 40A - 63A Serie BA - serie BM
Supplier	Naxso Srl 10135 TORINO (I)
Description	Light Busbar trunking system

To which this declaration relates is in conformity with the following standard

Standard, Norme:	CEI 17/13-1-2 CEI EN 60439/1-2 CEI EN 61000-2-4 (CEI 110-27) DIN VDE 0660 parte 500-502 CEI EN 60068-2-11:2000 Class CEI 104-17-F.5890
------------------	---

Type tests

1. Temperature-rise limits
2. Dielectric properties
3. Short-circuit strength
4. Effectiveness of the protective circuit
5. Clearances and creepage distances
6. Mechanical operation
7. Degree of protection
8. Electrical characteristics
9. Structural strength
10. Crushing resistance
11. Resistance to flame propagation
12. Fire barrier in building penetration

This declaration of Conformity according to EN 45014, was issued after tests in laboratory

Date of issue
22/05/2008

NAXSO S.r.l.



DECLARATION OF EC CONFORMITY

No. TL/Prot20210

The product

Type reference	Naxsopower BP	40A - 63A - 100A - 160A
	Naxsopower BPK	250A - 315A - 400A
	Naxsopower BPG	250A - 400A - 500A - 630A
	Naxsopower BPGG	800A - 1000A

Supplier	Naxso Srl 10135 TORINO (I)
----------	-------------------------------

Description	Light Busbar trunking system
-------------	------------------------------

To which this declaration relates is in conformity with the following standard

Standard, Norme:

CEI 17/13-1-2
 CEI EN 60439/1-2
 CEI EN 61000-2-4 (CEI 110-27)
 DIN VDE 0660 parte 500-502
 CEI EN 60068-2-11:2000 Class
 CEI 104-17-F.5890

Type tests

1. Temperature-rise limits
2. Dielectric properties
3. Short-circuit strength
4. Effectiveness of the protective circuit
5. Clearances and creepage distances
6. Mechanical operation
7. Degree of protection
8. Electrical characteristics
9. Structural strength
10. Crushing resistance
11. Resistance to flame propagation
12. Fire barrier in building penetration

This declaration of Conformity according to EN 45014, was issued after tests in laboratory

Date of issue
10/07/2008

NAXSO S.r.l.

DECLARATION OF EC CONFORMITY

No. TL/Prot20221

The product

Type reference	Naxsosandwich 800A - 1000A - 1250A - 1600A - 2000A 2500A - 3200A - 4000A - 5000A
Supplier	Naxso Srl 10135 TORINO (I)
Description	Light Busbar trunking system

To which this declaration relates is in conformity with the following standard

Standard, Norme:	CEI 17/13-1-2 CEI EN 60439/1-2 CEI EN 61000-2-4 (CEI 110-27) DIN VDE 0660 parte 500-502 CEI EN 60068-2-11:2000 Class CEI 104-17-F.5890
------------------	---

Type tests

1. Temperature-rise limits
2. Dielectric properties
3. Short-circuit strength
4. Effectiveness of the protective circuit
5. Clearances and creepage distances
6. Mechanical operation
7. Degree of protection
8. Electrical characteristics
9. Structural strength
10. Crushing resistance
11. Resistance to flame propagation
12. Fire barrier in building penetration

This declaration of Conformity according to EN 45014, was issued after tests in laboratory

Date of issue
18/06/2008

NAXSO S.r.l.



